

**CORRECTIVE SERVICES**

**AUSTRALIA**

EMBARGO: 11.30AM (CANBERRA TIME) FRI 2 DEC 2005

**C O N T E N T S**

	<i>page</i>
Notes .....	2
Summary of findings .....	3

**TABLES**

<b>1</b> Persons in full-time custody .....	8
<b>2</b> Imprisonment rates .....	9
<b>3</b> Persons in full-time custody, by sex .....	10
<b>4</b> Imprisonment rates, by sex .....	11
<b>5</b> Persons in full-time custody, by type of custody .....	12
<b>6</b> Imprisonment rates, by type of custody .....	13
<b>7</b> Persons in full-time custody, by legal status .....	14
<b>8</b> Imprisonment rates, by legal status .....	15
<b>9</b> Sentenced prisoner receptions into full-time custody .....	16
<b>10</b> Indigenous persons in full-time custody, by sex .....	17
<b>11</b> Indigenous imprisonment rates, by sex .....	18
<b>12</b> Indigenous persons in full-time custody, by legal status .....	19
<b>13</b> Indigenous imprisonment rates, by legal status .....	20
<b>14</b> Persons in periodic detention, by sex .....	21
<b>15</b> Federal sentenced persons in full-time custody, by sex .....	22
<b>16</b> Persons in community-based corrections, by sex .....	23
<b>17</b> Community-based corrections rates, by sex .....	24
<b>18</b> Persons in community-based corrections, by type of order .....	25

**ADDITIONAL INFORMATION**

Explanatory Notes .....	27
Glossary .....	33

**I N Q U I R I E S**

For further information about these and related statistics, contact the National Information and Referral Service on 1300 135 070 or Marika Woodberry on Melbourne (03) 9615 7601.

# NOTES

## FORTHCOMING ISSUES

*ISSUE (Quarter)*

*RELEASE DATE*

December 2005

23 March 2006



## ABOUT THIS PUBLICATION

This publication presents information on persons in custody and community-based corrections. The statistics are derived from information provided to the Australian Bureau of Statistics (ABS) from administrative records held by corrective services agencies in each state and territory, and from the Australian Government Attorney-General's Department for details on federal prisoners. Details are provided for each state and territory on: numbers and imprisonment rates by type of custody (i.e. open or secure custody or periodic detention); prisoner numbers by legal status (sentenced or unsentenced) for all prisoners and for Indigenous prisoners; the number of sentenced receptions into custody; the number of federal prisoners; and the numbers and rates of persons serving community-based corrections orders.

The ABS acknowledges the valuable contribution of the Board of Management and the Advisory Group of the National Corrective Services Statistics Unit as well as the staff of the various agencies that provide the statistics that are presented in this publication.

## FURTHER INFORMATION

More information about ABS activities in the field of crime and justice statistics is available from the Crime and Justice theme page on the ABS web site <[www.abs.gov.au](http://www.abs.gov.au)>. Details of other ABS publications relating to Crime and Justice statistics can be found in paragraphs 40–41 of the Explanatory Notes.



## ABBREVIATIONS

ABS	Australian Bureau of Statistics
ACT	Australian Capital Territory
Aust.	Australia
ERP	estimated resident population
NCCJS	National Centre for Crime and Justice Statistics, Australian Bureau of Statistics
NSW	New South Wales
NT	Northern Territory
Qld	Queensland
SA	South Australia
Tas.	Tasmania
Vic.	Victoria
WA	Western Australia

Dennis Trewin  
Australian Statistician

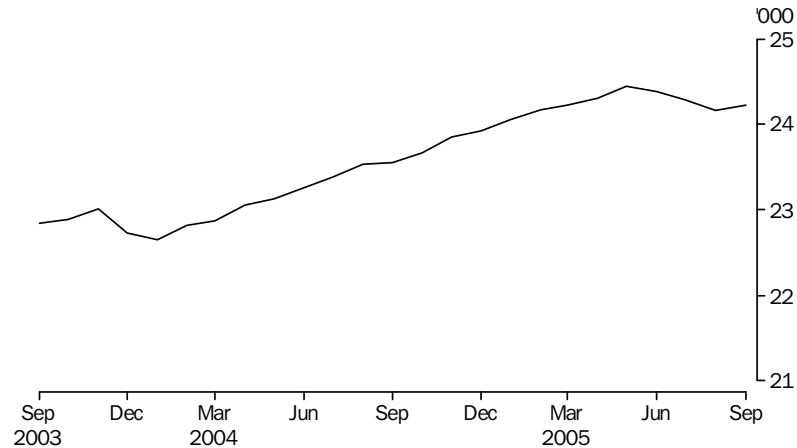
## SUMMARY OF FINDINGS

### PERSONS IN CORRECTIVE SERVICES

Based on first day of the month data, for the September quarter 2005 there were 79,202 persons under the authority of corrective services, an increase of 6% (4,251 persons) since the September quarter 2004. This total excluded those in periodic detention. The largest proportional increase was in South Australia (14%), followed by Tasmania and the Northern Territory (both 8%). The total comprised 24,296 persons in full-time custody and 54,906 persons in community-based corrections.

### NUMBER OF PRISONERS

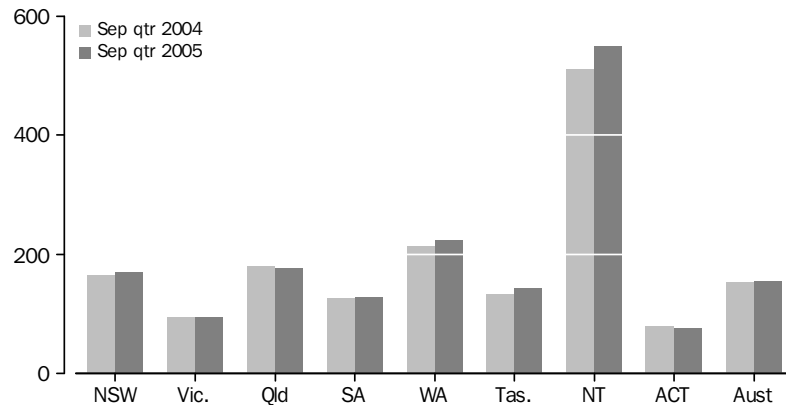
PERSONS IN PRISON CUSTODY, Average daily number per month



The average daily number of full-time prisoners in Australia in the September quarter 2005 was 24,226, a decrease of less than 1% on the June quarter 2005 and an increase of 3% on the September quarter 2004.

### RATES PER 100,000 ADULTS

AVERAGE DAILY IMPRISONMENT RATE (a), By State and Territory



(a) Rate per 100,000 adult population.

Nationally, the average daily imprisonment rate was 155 prisoners per 100,000 adult population during the September quarter 2005, an increase of 2% since the September quarter 2004 (153 prisoners). The Northern Territory had the highest imprisonment rate (550 prisoners per 100,000 adult population), followed by Western Australia (223) and Queensland (177). The Australian Capital Territory (including Australian Capital Territory prisoners held in New South Wales prisons) and Victoria had the lowest imprisonment rates (76 and 94 prisoners per 100,000 adults respectively).

## SUMMARY OF FINDINGS *continued*

**RATES PER 100,000  
ADULTS *continued***

The largest proportional increases in imprisonment rates since the September quarter 2004 were recorded in Tasmania and the Northern Territory (8%). The largest proportional decrease (4%) over the same period was recorded in the Australian Capital Territory.

**SEX**

Of the average daily number of full-time prisoners in Australia in the September quarter 2005, 22,602 (93%) were male and 1,624 (7%) were female. The average daily imprisonment rate for males was 294 prisoners per 100,000 adult male population, while for females it was 21 prisoners per 100,000 adult female population. Males were 14 times more likely to be in prison than females.

**TYPE OF FULL-TIME  
CUSTODY**

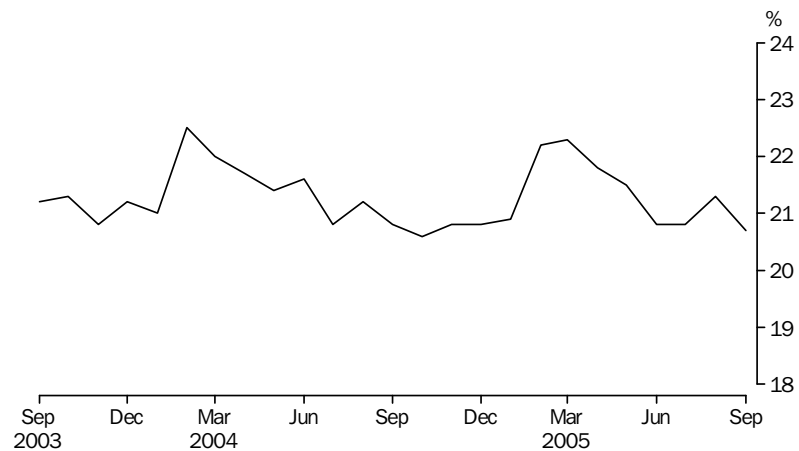
The average daily number of prisoners in secure prison custody in the September quarter 2005 was 18,266 (75% of prisoners in full-time custody). Open prison custody comprised 5,959 prisoners.

In the September quarter 2005, all prisoners held in full-time custody in the Australian Capital Territory were in secure custody. Of the other states and territories, Victoria had the highest proportion of prisoners in secure custody (89%), followed by South Australia (88%). New South Wales (including Australian Capital Territory prisoners held in New South Wales prisons) had the lowest proportion of prisoners in secure full-time custody (62%).

**LEGAL STATUS**

The average number of prisoners in full-time custody on the first day of each month in the September quarter 2005 was 24,296, comprising an average of 5,087 (21%) unsentenced and 19,209 sentenced (79%) prisoners. The Australian Capital Territory (including Australian Capital Territory prisoners held in New South Wales prisons) and South Australia had the highest proportions of unsentenced prisoners (at 34% each). The lowest proportions of unsentenced prisoners were recorded in Western Australia and Northern Territory (both 16%).

**PERSONS IN PRISON CUSTODY, Proportion unsentenced per month**



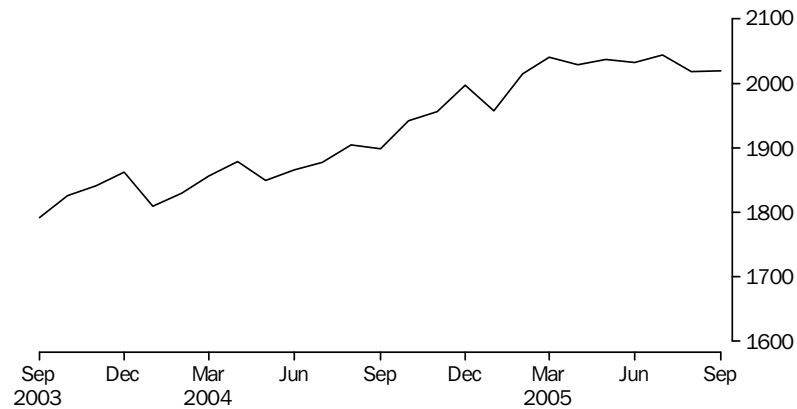
**SENTENCED PRISONER  
RECEPTIONS**

There were 5,916 sentenced prisoner receptions into full-time custody in Australia in the September quarter 2005. The number of sentenced receptions has decreased by 435 (7%) since the June quarter 2005, and by 196 (3%) since the September quarter 2004.

## SUMMARY OF FINDINGS *continued*

### INDIGENOUS PRISONERS

### INDIGENOUS PERSONS IMPRISONMENT RATE (a)



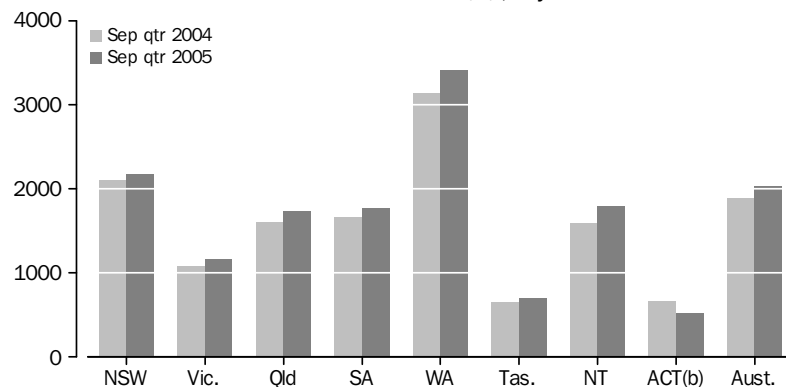
(a) Rate per 100,000 adult Indigenous population.

In the September quarter 2005 there were 5,670 Indigenous adult prisoners in full-time custody in Australia, comprising 5,203 (92%) males and 467 (8%) females. Almost 80% of the total Indigenous prisoner population was located in three states: New South Wales (1,732 persons); Western Australia (1,375); and Queensland (1,354).

The national rate of imprisonment for Indigenous people in the September quarter 2005 was 2,027 per 100,000 adult Indigenous population, an increase of 7% since the September quarter 2004 and a decrease of less than 1% since the June quarter 2005.

The highest rate of imprisonment for Indigenous prisoners was recorded in Western Australia (3,421 Indigenous prisoners per 100,000 adult Indigenous population), followed by New South Wales (2,176).

### INDIGENOUS IMPRISONMENT RATE (a), By State and Territory



(a) Rate per 100,000 adult Indigenous population, based on first day of month.

(b) Apparent variations in ACT rates may be as a result of small counts, see tables 10 and 11.

The largest proportional increase (13%) in the rate of imprisonment of Indigenous people since the September quarter 2004 was recorded in the Northern Territory. The next highest increase was in Western Australia (9%), followed by Queensland (8%).

The age standardised national rate of imprisonment of Indigenous people from the National Prisoner Census at June 2004 was 11 times higher (1,417) than the rate for non-Indigenous people (129). Imprisonment rates in the National Prisoner Census take into account the different age profiles of the Indigenous and non-Indigenous

## SUMMARY OF FINDINGS *continued*

### INDIGENOUS PRISONERS *continued*

populations. Further information on the comparison of imprisonment rates between Indigenous and non-Indigenous populations can be found in *Prisoners in Australia 2004* (cat. no. 4517.0).

### PERIODIC DETENTION

Periodic detention is a form of custody only used in New South Wales and the Australian Capital Territory. During the September quarter 2005 there was an average daily number of 854 persons in New South Wales and 102 persons in the Australian Capital Territory held in periodic detention. The rate of imprisonment for periodic detention increased in New South Wales by 12% and in the Australian Capital Territory by 3% between the September quarters 2004 and 2005.

### FEDERAL PRISONERS

In the September quarter 2005, there were 663 federal prisoners in Australia, a decrease of 16 (2%) since the September quarter 2004. More than half (57%) of these federal prisoners were sentenced in New South Wales.

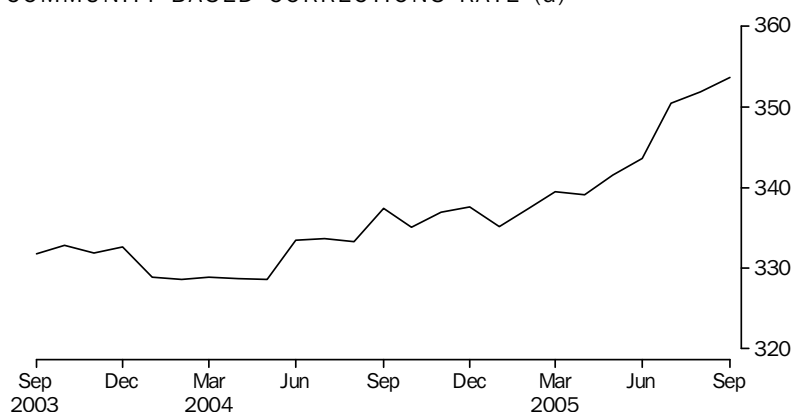
### PERSONS IN COMMUNITY-BASED CORRECTIONS

Community-based corrections orders are non-custodial orders under the authority of corrective services and include restricted movement, fine option, community service, parole, bail and sentenced probation. In the September quarter 2005, there were 54,906 persons in community-based corrections in Australia, an increase of 3% (1,852 persons) since the June quarter 2005 and 7% (3,411 persons) since the September quarter 2004.

### *Rates per 100,000 adults*

Nationally, the rate of persons in community-based corrections was 352 persons per 100,000 adult population for the September quarter 2005. This was an increase of 5% since the September quarter 2004 (335 persons per 100,000 adults). The largest increases since the September quarter 2004 were recorded in South Australia (16%), followed by New South Wales and the Australian Capital Territory (both 7%).

COMMUNITY-BASED CORRECTIONS RATE (a)

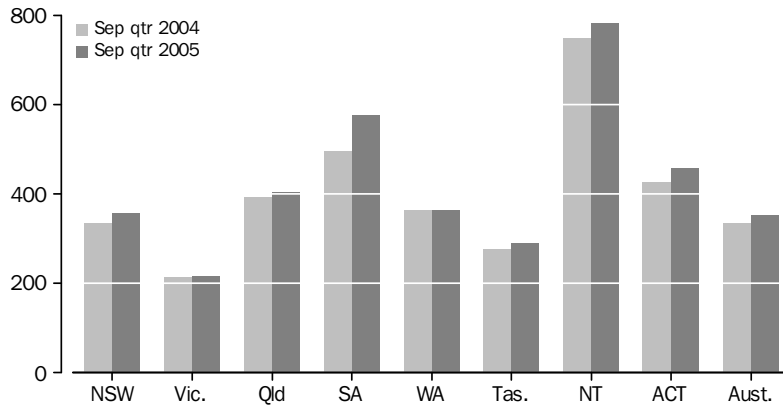


(a) Rate per 100,000 adult population.

## SUMMARY OF FINDINGS *continued*

*Rates per 100,000 adults  
continued*

COMMUNITY-BASED CORRECTIONS RATE (a), By State and Territory



(a) Rate per 100,000 adult population.

In the September quarter 2005, the rate of community-based corrections for males was 583 per 100,000 adult male population compared to 125 females per 100,000 adult female population. Males were almost five times more likely to be in community-based corrections than females.

*Type of orders*

In the September quarter 2005, there were 9,458 persons serving parole orders following a period of imprisonment. More than three quarters (76%) of the total persons serving parole orders were located in three states: New South Wales (4,232 persons); Victoria (1,635); and Western Australia (1,343).

## PERSONS IN FULL-TIME CUSTODY

	NSW(a)	Vic.	Qld(b)	SA	WA	Tas.	NT	ACT in ACT(c)	ACT in NSW(a)(d)	ACT Total(e)	Aust.(a)
AVERAGE DAILY NUMBER											
<b>2002</b>	7 705	3 550	5 030	1 469	2 803	423	675	58	133	190	21 713
<b>2003</b>	8 012	3 718	5 217	1 480	2 915	445	727	64	124	189	22 578
<b>2004</b>	8 522	3 595	5 283	1 473	3 161	484	727	68	118	186	23 312
<b>2004</b>											
Sep Qtr	8 575	3 643	5 320	1 490	3 191	484	714	73	123	196	23 490
Dec Qtr	8 709	3 597	5 346	1 512	3 303	535	748	66	117	183	23 816
<b>2005</b>											
Mar Qtr	8 939	3 535	5 305	1 536	3 453	520	798	67	112	178	24 152
Jun Qtr	8 962	3 608	5 350	1 484	3 543	545	820	69	114	182	24 380
Sep Qtr	8 899	3 674	5 357	1 525	3 390	529	783	68	121	189	24 226
<b>2004</b>											
Jul	8 557	3 632	5 308	1 478	3 149	459	723	77	120	197	23 382
Aug	8 609	3 653	5 336	1 493	3 184	479	711	71	126	197	23 536
Sep	8 557	3 644	5 317	1 499	3 243	514	709	70	122	192	23 554
Oct	8 639	3 617	5 326	1 511	3 268	531	713	66	115	181	23 669
Nov	8 685	3 596	5 390	1 510	3 319	539	753	63	116	179	23 855
Dec	8 801	3 579	5 325	1 514	3 324	536	778	69	119	189	23 926
<b>2005</b>											
Jan	8 952	3 576	5 272	1 524	3 372	519	777	68	120	188	24 060
Feb	8 934	3 511	5 316	1 559	3 471	515	802	67	109	176	24 174
Mar	8 932	3 516	5 328	1 526	3 517	525	815	65	106	170	24 222
Apr	8 951	3 552	5 342	1 501	3 538	533	822	69	111	181	24 308
May	8 985	3 605	5 352	1 494	3 561	551	829	68	115	183	24 446
Jun	8 949	3 667	5 356	1 457	3 528	550	808	68	114	183	24 383
Jul	8 920	3 692	5 351	1 487	3 446	535	798	59	116	175	24 288
Aug	8 883	3 665	5 335	1 542	3 367	525	778	69	124	193	24 165
Sep	8 893	3 665	5 386	1 546	3 356	527	774	76	124	201	24 224

- (a) Includes ACT prisoners held in NSW prisons. The ACT in NSW figures are a subset of the NSW figures and are not separately counted in the Australian totals – see Explanatory Notes, paragraph 20.
- (b) From August 2005, data were sourced from two information systems and may be subject to variability.
- (c) Refers to unsentenced persons in ACT prison custody and may include some sentenced fine default only prisoners – see Explanatory Notes, paragraph 20.
- (d) Prior to December quarter 2004, these figures are a single count taken on a specific day of the month and are not an average of the daily prisoner population for that month.
- (e) ACT in ACT figures and ACT in NSW figures may not add to ACT total due to rounding.



## IMPRISONMENT RATES

	NSW(a)	Vic.	Qld(b)	SA	WA	Tas.	NT	ACT(c)	Aust.
RATE PER 100,000 ADULT POPULATION									
<b>2002</b>	150.9	94.1	179.8	126.2	195.1	119.7	484.2	78.7	145.5
<b>2003</b>	155.6	97.4	181.7	125.9	199.7	124.7	526.5	77.0	149.2
<b>2004</b>	164.2	93.1	179.2	124.4	212.6	133.3	520.0	75.5	151.9
<b>2004</b>									
Sep Qtr	164.9	94.1	179.7	125.7	214.1	133.0	510.5	79.2	152.7
Dec Qtr	167.3	92.7	179.7	127.3	220.8	146.8	532.0	74.0	154.4
<b>2005</b>									
Mar Qtr	171.5	90.7	177.4	129.1	229.6	142.3	565.5	72.0	156.0
Jun Qtr	171.4	92.3	177.9	124.5	234.3	148.5	579.6	73.4	156.9
Sep Qtr	169.7	93.7	176.8	127.6	223.3	144.0	549.8	76.1	155.3
<b>2004</b>									
Jul	164.6	93.8	179.3	124.7	211.2	126.2	516.5	79.8	152.0
Aug	165.5	94.4	180.3	125.9	213.6	131.7	508.0	79.9	153.0
Sep	164.6	94.1	179.6	126.5	217.6	141.3	506.9	77.8	153.1
Oct	166.0	93.2	179.0	127.3	218.4	145.7	507.1	73.2	153.4
Nov	166.9	92.6	181.2	127.2	221.8	147.8	535.6	72.3	154.6
Dec	169.1	92.2	179.0	127.5	222.2	147.0	553.5	76.3	155.1
<b>2005</b>									
Jan	171.6	91.8	176.3	128.1	224.3	142.0	550.9	75.9	155.4
Feb	171.4	90.1	177.7	131.0	230.8	141.0	568.3	71.2	156.1
Mar	171.5	90.2	178.1	128.3	233.9	143.7	577.6	68.8	156.5
Apr	171.2	90.9	177.6	125.9	234.0	145.3	581.2	72.9	156.4
May	171.8	92.2	178.0	125.3	235.5	150.2	586.1	73.8	157.3
Jun	171.1	93.8	178.1	122.2	233.3	150.1	571.3	73.6	156.9
Jul	170.2	94.1	176.6	124.4	227.0	145.5	560.0	70.3	155.7
Aug	169.3	93.5	176.0	129.0	221.8	143.0	546.2	77.6	154.9
Sep	169.5	93.5	177.7	129.3	221.0	143.4	543.0	80.5	155.3

(a) Excludes ACT prisoners held in NSW prisons.

(b) From August 2005, data were sourced from two information systems and may be subject to variability.

(c) Includes ACT prisoners held in ACT as well as ACT prisoners held in NSW – see Explanatory Notes, paragraph 22.

## PERSONS IN FULL-TIME CUSTODY, By sex

	NSW(a)	Vic.	Qld(b)	SA	WA	Tas.	NT	ACT in ACT(c)	ACT in NSW(a)(d)	ACT Total(e)	Aust.(a)
MALES (AVERAGE DAILY NUMBER)											
<b>2002</b>	7 207	3 293	4 701	1 381	2 603	392	655	55	124	179	20 286
<b>2003</b>	7 497	3 449	4 874	1 386	2 695	416	706	61	118	180	21 084
<b>2004</b>	7 951	3 346	4 934	1 384	2 905	453	708	64	113	176	21 746
<b>2004</b>											
Sep Qtr	8 007	3 388	4 963	1 395	2 926	455	698	68	116	185	21 901
Dec Qtr	8 131	3 341	4 986	1 427	3 039	501	727	65	112	177	22 217
<b>2005</b>											
Mar Qtr	8 306	3 279	4 952	1 446	3 182	492	772	64	106	170	22 492
Jun Qtr	8 345	3 349	4 990	1 393	3 276	516	793	66	108	174	22 727
Sep Qtr	8 302	3 416	4 995	1 423	3 144	496	760	65	116	181	22 602
Jul	8 325	3 434	4 989	1 391	3 184	505	774	58	111	169	22 660
Aug	8 288	3 405	4 980	1 437	3 124	493	755	65	119	184	22 548
Sep	8 292	3 409	5 018	1 441	3 123	491	751	73	119	192	22 599
FEMALES (AVERAGE DAILY NUMBER)											
<b>2002</b>	497	257	329	88	200	32	19	3	8	12	1 426
<b>2003</b>	515	269	343	94	220	29	21	3	6	9	1 495
<b>2004</b>	572	249	349	88	255	31	18	4	5	10	1 566
<b>2004</b>											
Sep Qtr	567	255	357	95	265	28	16	5	6	11	1 589
Dec Qtr	577	256	360	85	265	34	20	2	5	6	1 599
<b>2005</b>											
Mar Qtr	633	256	353	90	271	28	26	3	6	8	1 660
Jun Qtr	617	260	360	91	267	28	27	3	5	8	1 652
Sep Qtr	597	258	362	102	246	33	23	3	5	8	1 624
Jul	594	258	363	96	262	30	23	2	5	7	1 628
Aug	594	260	355	105	243	33	23	4	5	9	1 617
Sep	601	256	368	105	234	36	23	3	5	8	1 625
PERSONS (AVERAGE DAILY NUMBER)											
<b>2002</b>	7 705	3 550	5 030	1 469	2 803	423	675	58	133	190	21 713
<b>2003</b>	8 012	3 718	5 217	1 480	2 915	445	727	64	124	189	22 578
<b>2004</b>	8 522	3 595	5 283	1 473	3 161	484	727	68	118	186	23 312
<b>2004</b>											
Sep Qtr	8 575	3 643	5 320	1 490	3 191	484	714	73	123	196	23 490
Dec Qtr	8 709	3 597	5 346	1 512	3 303	535	748	66	117	183	23 816
<b>2005</b>											
Mar Qtr	8 939	3 535	5 305	1 536	3 453	520	798	67	112	178	24 152
Jun Qtr	8 962	3 608	5 350	1 484	3 543	545	820	69	114	182	24 380
Sep Qtr	8 899	3 674	5 357	1 525	3 390	529	783	68	121	189	24 226
Jul	8 920	3 692	5 351	1 487	3 446	535	798	59	116	175	24 288
Aug	8 883	3 665	5 335	1 542	3 367	525	778	69	124	193	24 165
Sep	8 893	3 665	5 386	1 546	3 356	527	774	76	124	201	24 224

- (a) Includes ACT prisoners held in NSW prisons. The ACT in NSW figures are a subset of the NSW figures and are not separately counted in the Australian totals – see Explanatory Notes, paragraph 20.
- (b) From August 2005, data were sourced from two information systems and may be subject to variability.
- (c) Refers to unsentenced persons in ACT prison custody and may include some sentenced fine default only prisoners – see Explanatory Notes, paragraph 20.
- (d) Prior to the December quarter 2004, the figures are a single count taken on a specific day of the month and are not an average of the daily prisoner population for that month.
- (e) ACT in ACT figures and ACT in NSW figures may not add to ACT total due to rounding.

## IMPRISONMENT RATES, By sex

	NSW(a)	Vic.	Qld(b)	SA	WA	Tas.	NT	ACT(c)	Aust.
MALES (RATE PER 100,000 ADULT POPULATION)									
<b>2002</b>	287.3	179.2	341.2	242.5	364.4	227.9	893.8	150.9	276.8
<b>2003</b>	296.2	185.3	344.7	241.0	372.0	239.7	970.6	150.3	283.7
<b>2004</b>	311.4	177.6	338.4	238.6	393.5	256.5	957.5	146.3	288.0
<b>2004</b>									
Sep Qtr	312.9	179.3	338.8	240.2	395.1	257.0	941.5	152.6	289.3
Dec Qtr	317.3	176.4	338.6	245.1	408.7	282.3	977.3	145.8	292.6
<b>2005</b>									
Mar Qtr	323.7	172.4	334.5	247.8	425.8	276.3	1 033.3	139.8	295.1
Jun Qtr	324.1	175.5	335.2	238.3	436.0	288.9	1 059.3	143.1	297.1
Sep Qtr	321.3	178.4	332.3	242.6	416.1	277.1	1 007.3	148.7	294.1
Jul	322.4	179.3	331.9	237.2	421.4	281.8	1 025.9	138.1	294.9
Aug	320.7	177.8	331.3	245.1	413.5	275.0	1 000.6	150.6	293.4
Sep	320.8	178.0	333.9	245.7	413.3	274.3	995.1	157.6	294.1
FEMALES (RATE PER 100,000 ADULT POPULATION)									
<b>2002</b>	19.2	13.3	23.2	14.8	27.7	17.4	29.5	9.5	18.8
<b>2003</b>	19.8	13.7	23.6	15.6	29.9	15.9	32.7	7.0	19.4
<b>2004</b>	21.8	12.6	23.4	14.6	34.1	16.5	28.0	7.7	20.1
<b>2004</b>									
Sep Qtr	21.5	12.9	23.9	15.7	35.4	15.1	25.1	8.7	20.3
Dec Qtr	22.0	12.9	24.0	14.0	35.2	18.2	30.6	4.9	20.4
<b>2005</b>									
Mar Qtr	24.0	12.8	23.4	14.8	35.9	15.0	39.4	6.7	21.1
Jun Qtr	23.3	13.0	23.7	15.0	35.1	15.2	40.2	6.3	20.9
Sep Qtr	22.5	12.9	23.7	16.7	32.3	17.5	34.3	6.3	20.5
Jul	22.5	12.8	23.7	15.8	34.4	16.0	35.0	5.1	20.6
Aug	22.4	13.0	23.2	17.2	31.8	17.5	34.2	7.3	20.4
Sep	22.7	12.8	24.1	17.2	30.6	19.0	33.6	6.4	20.5
PERSONS (RATE PER 100,000 ADULT POPULATION)									
<b>2002</b>	150.9	94.1	179.8	126.2	195.1	119.7	484.2	78.7	145.5
<b>2003</b>	155.6	97.4	181.7	125.9	199.7	124.7	526.5	77.0	149.2
<b>2004</b>	164.2	93.1	179.2	124.4	212.6	133.3	520.0	75.5	151.9
<b>2004</b>									
Sep Qtr	164.9	94.1	179.7	125.7	214.1	133.0	510.5	79.2	152.7
Dec Qtr	167.3	92.7	179.7	127.3	220.8	146.8	532.0	74.0	154.4
<b>2005</b>									
Mar Qtr	171.5	90.7	177.4	129.1	229.6	142.3	565.5	72.0	156.0
Jun Qtr	171.4	92.3	177.9	124.5	234.3	148.5	579.6	73.4	156.9
Sep Qtr	169.7	93.7	176.8	127.6	223.3	144.0	549.8	76.1	155.3
Jul	170.2	94.1	176.6	124.4	227.0	145.5	560.0	70.3	155.7
Aug	169.3	93.5	176.0	129.0	221.8	143.0	546.2	77.6	154.9
Sep	169.5	93.5	177.7	129.3	221.0	143.4	543.0	80.5	155.3

(a) Excludes ACT prisoners held in NSW prisons.

(b) From August 2005, data were sourced from two information systems and may be subject to variability.

(c) Includes ACT prisoners held in ACT as well as ACT prisoners held in NSW – see Explanatory Notes, paragraph 22.

## PERSONS IN FULL-TIME CUSTODY, By type of custody

	NSW(a)(b)	Vic.(c)	Qld(d)	SA	WA	Tas.	NT	ACT in ACT(e)	ACT in NSW(a)(f)	ACT Total(g)	Aust.(a)(b)
PERSONS IN SECURE CUSTODY (AVERAGE DAILY NUMBER)											
<b>2002</b>	4 207	3 151	4 218	1 290	1 972	337	543	58	39	97	15 776
<b>2003</b>	4 357	3 317	4 316	1 304	2 031	350	586	64	29	93	16 325
<b>2004</b>	4 517	3 240	4 407	1 308	2 204	394	571	68	24	92	16 708
<b>2004</b>											
Sep Qtr	4 559	3 271	4 412	1 317	2 216	393	556	73	26	99	16 796
Dec Qtr	4 606	3 243	4 431	1 341	2 280	441	587	66	26	92	16 995
<b>2005</b>											
Mar Qtr	4 754	r3 201	4 423	1 369	2 397	432	627	67	27	94	r17 269
Jun Qtr	4 771	r3 211	4 504	1 313	2 537	455	645	69	28	96	r17 504
Sep Qtr	5 491	3 261	4 515	1 348	2 516	454	614	68	28	96	18 266
Jul	5 554	3 267	4 503	1 315	2 535	457	624	59	25	84	18 313
Aug	5 453	3 254	4 492	1 365	2 510	451	605	69	29	98	18 198
Sep	5 467	3 261	4 552	1 366	2 501	454	612	76	30	106	18 288
PERSONS IN OPEN CUSTODY (AVERAGE DAILY NUMBER)											
<b>2002</b>	3 498	400	812	178	831	86	132	..	94	94	5 937
<b>2003</b>	3 655	400	901	175	884	96	141	..	95	95	6 253
<b>2004</b>	4 005	356	876	165	957	89	155	..	94	94	6 604
<b>2004</b>											
Sep Qtr	4 016	372	908	173	976	90	158	..	96	96	6 693
Dec Qtr	4 102	354	915	171	1 023	94	161	..	91	91	6 821
<b>2005</b>											
Mar Qtr	4 185	r334	882	167	1 056	88	171	..	84	84	r6 883
Jun Qtr	4 191	r397	846	171	1 006	90	175	..	86	86	r6 876
Sep Qtr	3 407	414	842	176	875	75	170	..	93	93	5 959
Jul	3 366	424	848	172	912	78	174	..	91	91	5 974
Aug	3 430	412	843	177	857	75	173	..	95	95	5 967
Sep	3 427	405	834	180	855	73	162	..	94	94	5 936
PERSONS IN CUSTODY (AVERAGE DAILY NUMBER)											
<b>2002</b>	7 705	3 550	5 030	1 469	2 803	423	675	58	133	190	21 713
<b>2003</b>	8 012	3 718	5 217	1 480	2 915	445	727	64	124	189	22 578
<b>2004</b>	8 522	3 595	5 283	1 473	3 161	484	727	68	118	186	23 312
<b>2004</b>											
Sep Qtr	8 575	3 643	5 320	1 490	3 191	484	714	73	123	196	23 490
Dec Qtr	8 709	3 597	5 346	1 512	3 303	535	748	66	117	183	23 816
<b>2005</b>											
Mar Qtr	8 939	3 535	5 305	1 536	3 453	520	798	67	112	178	24 152
Jun Qtr	8 962	r3 608	5 350	1 484	3 543	545	820	69	114	182	r24 380
Sep Qtr	8 899	3 674	5 357	1 525	3 390	529	783	68	121	189	24 226
Jul	8 920	3 692	5 351	1 487	3 446	535	798	59	116	175	24 288
Aug	8 883	3 665	5 335	1 542	3 367	525	778	69	124	193	24 165
Sep	8 893	3 665	5 386	1 546	3 356	527	774	76	124	201	24 224

.. not applicable

r revised

(a) Includes ACT prisoners held in NSW prisons. The ACT in NSW figures are a subset of the NSW figures and are not separately counted in the Australian totals – see Explanatory Notes, paragraph 20.

(b) The classification of some NSW correctional facilities changed from July 2005 – see Explanatory Notes, paragraph 30.

(c) Type of custody counts in Victoria have been affected by the closure of Beechworth Prison, and the opening of Beechworth Correctional Centre – see Explanatory Notes, paragraph 31.

(d) From August 2005, data were sourced from two information systems and may be subject to variability.

(e) Refers to unsentenced persons in ACT prison custody and may include some sentenced fine default only prisoners – see Explanatory Notes, paragraph 20.

(f) Prior to December quarter 2004, the figures are a single count taken on a specific day of the month and are not an average of the daily prisoner population for that month.

(g) ACT in ACT figures and ACT in NSW figures may not add to ACT total due to rounding.

## IMPRISONMENT RATES, By type of custody

	NSW(a)(b)	Vic.(c)	Qld(d)	SA	WA	Tas.	NT	ACT(e)	Aust.(b)
PERSONS IN SECURE CUSTODY (RATE PER 100,000 ADULT POPULATION)									
<b>2002</b>	83.1	83.5	150.8	110.8	137.2	95.3	389.7	39.9	105.7
<b>2003</b>	85.4	86.9	150.3	111.0	139.1	97.9	424.5	38.1	107.9
<b>2004</b>	87.8	83.9	149.5	110.4	148.2	108.6	408.7	37.2	108.9
<b>2004</b>									
Sep Qtr	88.4	84.5	149.1	111.1	148.6	108.1	397.5	40.2	109.2
Dec Qtr	89.2	83.5	148.9	112.9	152.4	121.1	417.5	37.2	110.2
<b>2005</b>									
Mar Qtr	91.8	r82.2	147.9	115.0	159.4	118.1	444.1	37.9	r111.5
Jun Qtr	91.9	r82.1	149.8	110.1	167.8	124.1	455.8	38.8	r112.6
Sep Qtr	105.6	83.2	149.0	112.8	165.7	123.4	430.7	38.5	117.1
Jul	106.9	83.3	148.6	110.0	166.9	124.4	437.8	33.8	117.4
Aug	104.9	83.0	148.2	114.2	165.3	122.6	424.8	39.2	116.7
Sep	105.1	83.2	150.2	114.3	164.7	123.4	429.5	42.7	117.3
PERSONS IN OPEN CUSTODY (RATE PER 100,000 ADULT POPULATION)									
<b>2002</b>	67.8	10.6	29.0	15.3	57.8	24.4	94.4	38.8	39.8
<b>2003</b>	70.2	10.5	31.4	14.9	60.6	26.8	102.0	38.9	41.3
<b>2004</b>	76.4	9.2	29.7	13.9	64.4	24.7	111.2	38.4	43.0
<b>2004</b>									
Sep Qtr	76.5	9.6	30.7	14.6	65.5	24.9	113.0	39.0	43.5
Dec Qtr	78.1	9.1	30.8	14.4	68.4	25.7	114.5	36.8	44.2
<b>2005</b>									
Mar Qtr	79.7	r8.6	29.5	14.0	70.2	24.1	121.4	34.0	r44.5
Jun Qtr	79.5	r10.2	28.1	14.4	66.5	24.5	123.8	34.6	r44.2
Sep Qtr	64.1	10.5	27.8	14.7	57.6	20.5	119.1	37.5	38.2
Jul	63.3	10.8	28.0	14.4	60.0	21.2	122.2	36.5	38.3
Aug	64.5	10.5	27.8	14.8	56.4	20.4	121.4	38.3	38.3
Sep	64.4	10.3	27.5	15.1	56.3	20.0	113.5	37.8	38.1
PERSONS IN CUSTODY (RATE PER 100,000 ADULT POPULATION)									
<b>2002</b>	150.9	94.1	179.8	126.2	195.1	119.7	484.2	78.7	145.5
<b>2003</b>	155.6	97.4	181.7	125.9	199.7	124.7	526.5	77.0	149.2
<b>2004</b>	164.2	93.1	179.2	124.4	212.6	133.3	520.0	75.5	151.9
<b>2004</b>									
Sep Qtr	164.9	94.1	179.7	125.7	214.1	133.0	510.5	79.2	152.7
Dec Qtr	167.3	92.7	179.7	127.3	220.8	146.8	532.0	74.0	154.4
<b>2005</b>									
Mar Qtr	171.5	90.7	177.4	129.1	229.6	142.3	565.5	72.0	156.0
Jun Qtr	171.4	r92.3	177.9	124.5	234.3	148.5	579.6	73.4	156.9
Sep Qtr	169.7	93.7	176.8	127.6	223.3	144.0	549.8	76.1	155.3
Jul	170.2	94.1	176.6	124.4	227.0	145.5	560.0	70.3	155.7
Aug	169.3	93.5	176.0	129.0	221.8	143.0	546.2	77.6	154.9
Sep	169.5	93.5	177.7	129.3	221.0	143.4	543.0	80.5	155.3

r revised

(a) Excludes ACT prisoners held in NSW prisons.

(b) The classification of some NSW correctional facilities changed from July 2005 – see Explanatory Notes, paragraph 30.

(c) Type of custody rates in Victoria have been affected by the closure of Beechworth Prison, and the opening of Beechworth Correctional Centre – see Explanatory Notes, paragraph 31.

(d) From August 2005, data were sourced from two information systems and may be subject to variability.

(e) Includes ACT prisoners held in ACT as well as ACT prisoners held in NSW – see Explanatory Notes, paragraph 22.

**PERSONS IN FULL-TIME CUSTODY, By legal status(a)**

	NSW(b)	Vic.	Qld(c)	SA	WA	Tas.(d)	NT	ACT in ACT(e)	ACT in NSW(b)	ACT Total(f)	Aust.(b)(d)
<b>UNSENTENCED (NUMBER ON FIRST DAY OF MONTH)</b>											
<b>2002</b>	1 666	621	1 006	492	471	77	110	54	2	55	4 495
<b>2003</b>	1 847	699	1 099	491	446	81	126	57	—	57	4 847
<b>2004</b>	1 920	661	1 099	479	498	96	136	63	—	63	4 950
<b>2004</b>											
Sep Qtr	1 866	626	1 134	499	496	87	129	72	—	72	4 908
Dec Qtr	1 906	651	1 076	483	498	125	128	63	—	63	4 931
<b>2005</b>											
Mar Qtr	2 093	649	1 082	524	555	115	161	67	—	67	5 246
Jun Qtr	2 069	646	1 100	490	570	121	150	69	—	69	5 215
Sep Qtr	1 975	651	1 064	524	553	125	131	64	—	64	5 087
<b>SENTENCED (NUMBER ON FIRST DAY OF MONTH)</b>											
<b>2002</b>	6 061	2 922	3 952	984	2 334	303	567	2	131	133	17 123
<b>2003</b>	6 166	3 024	4 120	995	2 460	340	604	1	123	124	17 710
<b>2004</b>	6 583	2 941	4 184	1 006	2 636	387	592	1	119	120	18 331
<b>2004</b>											
Sep Qtr	6 695	3 014	4 185	1 000	2 680	384	588	1	123	124	18 548
Dec Qtr	6 750	2 955	4 281	1 047	2 789	416	609	1	119	120	18 848
<b>2005</b>											
Mar Qtr	6 817	2 885	4 214	1 028	2 854	407	626	1	111	112	18 832
Jun Qtr	6 892	2 947	4 245	1 023	2 980	418	671	—	113	113	19 176
Sep Qtr	6 943	3 026	4 303	1 005	2 862	404	665	1	122	123	19 209
<b>TOTAL (NUMBER ON FIRST DAY OF MONTH)</b>											
<b>2002</b>	7 727	3 543	4 958	1 475	2 805	380	676	55	132	188	21 618
<b>2003</b>	8 013	3 724	5 219	1 486	2 906	421	729	59	123	181	22 556
<b>2004</b>	8 502	3 602	5 284	1 485	3 134	483	728	64	119	182	23 281
<b>2004</b>											
Sep Qtr	8 560	3 640	5 320	1 499	3 176	471	717	73	123	195	23 456
Dec Qtr	8 656	3 606	5 357	1 530	3 287	541	738	63	119	183	23 779
<b>2005</b>											
Mar Qtr	8 910	3 534	5 295	1 551	3 409	523	787	68	111	178	24 078
Jun Qtr	8 961	3 593	5 345	1 512	3 550	539	821	69	113	182	24 391
Sep Qtr	8 918	3 677	5 367	1 528	3 416	529	796	65	122	187	24 296
Jul	8 939	3 690	5 367	1 499	3 482	551	822	62	118	180	24 412
Aug	8 899	3 676	5 326	1 521	3 407	517	790	58	125	183	24 194
Sep	8 917	3 665	5 408	1 565	3 358	519	775	75	124	199	24 282

— nil or rounded to zero (including null cells)

(a) Figures for the quarter and year for first day of month counts are calculated as a simple average – see Explanatory Notes, paragraph 5.

(b) Includes ACT prisoners held in NSW prisons. The ACT in NSW figures are a subset of the NSW figures and are not separately counted in the Australian totals – see Explanatory Notes, paragraph 20.

(c) From August 2005, data were sourced from two information systems and may be subject to variability.

(d) Tas. data prior to the September quarter 2003 are under enumerated – see Explanatory Notes, paragraph 13.

(e) Refers to unsentenced persons in ACT prison custody and may include some sentenced fine default only prisoners – see Explanatory Notes, paragraph 20.

(f) ACT in ACT figures and ACT in NSW figures may not add to ACT total due to rounding.

## IMPRISONMENT RATES, By legal status(a)

	NSW(b)	Vic.	Qld(c)	SA	WA	Tas.(d)	NT	ACT(e)	Aust.(d)
UNSENTENCED (RATE PER 100,000 ADULT POPULATION)									
<b>2002</b>	33.2	16.5	36.0	42.2	32.8	21.7	78.6	22.8	30.1
<b>2003</b>	36.4	18.3	38.3	41.8	30.5	22.5	91.0	23.5	32.0
<b>2004</b>	37.5	17.1	37.3	40.4	33.5	26.3	97.2	25.5	32.3
<b>2004</b>									
Sep Qtr	36.4	16.2	38.3	42.1	33.3	23.9	92.2	29.0	31.9
Dec Qtr	37.1	16.8	36.2	40.7	33.3	34.3	91.3	25.3	32.0
<b>2005</b>									
Mar Qtr	40.7	16.7	36.2	44.0	36.9	31.6	113.9	26.9	33.9
Jun Qtr	40.1	16.5	36.6	41.1	37.7	33.1	105.8	27.8	33.6
Sep Qtr	38.2	16.6	35.1	43.8	36.4	34.0	91.9	25.7	32.6
SENTENCED (RATE PER 100,000 ADULT POPULATION)									
<b>2002</b>	118.2	77.5	141.3	84.5	162.4	85.6	406.7	54.8	114.7
<b>2003</b>	119.2	79.2	143.5	84.6	168.5	95.3	436.9	50.6	117.0
<b>2004</b>	126.3	76.1	141.9	85.0	177.3	106.8	423.3	48.6	119.4
<b>2004</b>									
Sep Qtr	128.2	77.9	141.4	84.4	179.8	105.6	420.6	50.1	120.6
Dec Qtr	129.1	76.1	143.9	88.2	186.4	114.2	433.5	48.5	122.2
<b>2005</b>									
Mar Qtr	130.3	74.0	140.9	86.4	189.8	111.5	443.9	45.1	121.6
Jun Qtr	131.3	75.4	141.1	85.8	197.1	114.0	474.2	45.5	123.4
Sep Qtr	131.9	77.2	142.0	84.1	188.5	109.9	466.5	49.5	123.2
TOTAL (RATE PER 100,000 ADULT POPULATION)									
<b>2002</b>	151.4	93.9	177.2	126.7	195.2	107.3	485.3	77.5	144.9
<b>2003</b>	155.6	97.5	181.7	126.4	199.0	117.9	527.9	74.1	149.0
<b>2004</b>	163.8	93.2	179.2	125.4	210.8	133.1	520.4	74.0	151.7
<b>2004</b>									
Sep Qtr	164.6	94.0	179.7	126.5	213.1	129.5	512.8	79.1	152.5
Dec Qtr	166.3	92.9	180.0	128.9	219.7	148.5	524.9	73.9	154.1
<b>2005</b>									
Mar Qtr	171.0	90.7	177.1	130.4	226.8	143.1	557.7	72.0	155.5
Jun Qtr	171.4	91.9	177.7	126.8	234.8	147.1	580.0	73.4	157.0
Sep Qtr	170.0	93.8	177.1	127.9	224.9	143.9	558.4	75.2	155.8
Jul	170.5	94.1	177.1	125.4	229.3	149.9	576.9	72.3	156.5
Aug	169.6	93.8	175.7	127.3	224.4	140.7	554.5	73.5	155.1
Sep	170.0	93.5	178.4	130.9	221.1	141.2	543.9	79.9	155.7

(a) Figures for the quarter and year for first day of month counts are calculated as a simple average – see Explanatory Notes, paragraph 5.

(b) Excludes ACT prisoners held in NSW prisons.

(c) From August 2005, data were sourced from two information systems and may be subject to variability.

(d) Tas. data prior to the September quarter 2003 are under enumerated – see Explanatory Notes, paragraph 13.

(e) Includes ACT prisoners held in ACT as well as ACT prisoners held in NSW – see Explanatory Notes, paragraph 22.

SENTENCED PRISONER RECEPTIONS INTO FULL-TIME CUSTODY

	NSW(a)	Vic.	Qld(b)	SA	WA(c)	Tas. (d)	NT	ACT in ACT	ACT in NSW(a)	ACT Total	Aust.(a)(c)(d)
NUMBER											
<b>2002</b>	7 974	4 172	6 773	1 121	3 561	814	776	107	110	217	25 298
<b>2003</b>	6 979	4 039	6 300	1 259	3 658	540	1 037	71	98	169	23 883
<b>2004</b>	6 956	3 916	6 537	1 178	3 810	809	1 123	43	123	166	24 372
<b>2004</b>											
Sep Qtr	1 672	956	1 731	324	988	193	239	9	30	39	6 112
Dec Qtr	1 856	963	1 654	311	1 036	217	329	7	35	42	6 373
<b>2005</b>											
Mar Qtr	1 634	791	1 658	266	1 171	151	330	6	17	23	6 007
Jun Qtr	1 776	1 041	1 703	235	1 062	219	308	7	39	46	6 351
Sep Qtr	1 818	922	1 653	276	752	187	290	18	39	57	5 916

(a) Includes ACT prisoners held in NSW prisons. The ACT in NSW figures are a subset of the NSW figures and are not separately counted in the Australian totals – see Explanatory Notes, paragraph 20.

(b) From August 2005, data were sourced from two information systems and may be subject to variability.

(c) The reduction in the number of sentenced receptions in WA is due to a new fine default strategy – see Explanatory Notes, paragraph 37.

(d) Tas. data prior to January 2004 are under enumerated – see Explanatory Notes, paragraph 13.



	NSW(c)	Vic.	Qld(d)	SA	WA	Tas.(e)	NT	ACT in ACT(f)	ACT in NSW(c)	ACT Total(g)	Aust.(c)(e)
MALES (NUMBER ON FIRST DAY OF MONTH)											
<b>2002</b>	1 218	145	1 097	227	814	55	445	7	12	19	4 006
<b>2003</b>	1 324	159	1 123	230	927	53	555	8	11	19	4 380
<b>2004</b>	1 458	168	1 158	242	1 073	57	560	7	9	16	4 722
<b>2004</b>											
Sep Qtr	1 475	175	1 126	240	1 099	57	548	8	8	16	4 728
Dec Qtr	1 518	160	1 206	253	1 142	59	554	9	8	17	4 902
<b>2005</b>											
Mar Qtr	1 576	161	1 191	280	1 247	57	599	7	5	12	5 116
Jun Qtr	1 556	169	1 233	243	1 311	62	625	7	3	10	5 205
Sep Qtr	1 561	189	1 256	253	1 248	65	623	9	4	13	5 203
FEMALES (NUMBER ON FIRST DAY OF MONTH)											
<b>2002</b>	140	16	87	21	74	5	12	1	2	3	356
<b>2003</b>	145	13	87	21	92	5	14	—	1	1	377
<b>2004</b>	169	14	89	16	121	7	10	—	—	—	427
<b>2004</b>											
Sep Qtr	167	14	94	16	127	7	9	—	—	—	434
Dec Qtr	168	16	94	18	139	8	12	1	—	1	456
<b>2005</b>											
Mar Qtr	185	16	94	22	149	5	18	—	—	—	490
Jun Qtr	182	16	96	22	137	5	21	1	—	1	480
Sep Qtr	171	20	98	26	128	6	18	—	—	—	467
PERSONS (NUMBER ON FIRST DAY OF MONTH)											
<b>2002</b>	1 357	161	1 184	248	887	60	457	8	14	22	4 362
<b>2003</b>	1 469	172	1 210	251	1 019	58	569	9	12	20	4 757
<b>2004</b>	1 626	182	1 248	258	1 194	64	570	7	9	16	5 149
<b>2004</b>											
Sep Qtr	1 642	189	1 220	256	1 226	64	557	8	8	16	5 162
Dec Qtr	1 686	176	1 300	271	1 281	67	567	10	8	17	5 358
<b>2005</b>											
Mar Qtr	1 762	177	1 285	302	1 395	61	617	7	5	12	5 606
Jun Qtr	1 739	185	1 329	265	1 448	67	646	7	3	10	5 686
Sep Qtr	1 732	209	1 354	279	1 375	71	641	9	4	13	5 670

— nil or rounded to zero (including null cells)

- (a) Persons in custody are asked their Indigenous status during reception into custody – see Explanatory Notes, paragraphs 18-19.
- (b) Figures for the quarter and year for first day of the month counts are calculated as a simple average – see Explanatory Notes, paragraph 5.
- (c) Includes ACT prisoners held in NSW prisons. The ACT in NSW figures are a subset of the NSW figures and are not separately counted in the Australian totals – see Explanatory Notes, paragraph 20.

- (d) From August 2005, data were sourced from two information systems and may be subject to variability.
- (e) Tas. data prior to the September quarter 2003 are under enumerated – see Explanatory Notes, paragraph 13.
- (f) Refers to unsentenced persons in ACT prison custody and may include some sentenced fine default only prisoners – see Explanatory Notes, paragraph 20.
- (g) ACT in ACT figures and ACT in NSW figures may not add to ACT total due to rounding.

## INDIGENOUS IMPRISONMENT RATES, By sex(a)(b)(c)

	NSW(d)	Vic.	Qld(e)	SA	WA	Tas.	NT	ACT(f)	Aust.
MALES (RATE PER 100,000 ADULT INDIGENOUS POPULATION)									
<b>2002</b>	3 340.0	1 809.2	3 218.1	3 228.1	4 527.2	1 182.7	2 714.5	1 701.1	3 197.4
<b>2003</b>	3 559.6	1 911.8	3 201.4	3 191.1	5 031.2	1 129.9	3 312.7	1 675.4	3 408.0
<b>2004</b>	3 841.8	1 960.8	3 211.0	3 270.6	5 681.0	1 174.4	3 280.2	1 353.5	3 586.0
<b>2004</b>									
Sep Qtr	3 889.5	2 046.5	3 121.1	3 242.5	5 820.0	1 184.8	3 209.9	1 360.5	3 590.3
Dec Qtr	4 003.5	1 875.0	3 342.9	3 417.9	6 049.5	1 219.4	3 248.9	1 417.2	3 722.2
<b>2005</b>									
Mar Qtr	4 065.4	1 814.8	3 209.2	3 677.9	6 427.1	1 142.7	3 429.6	1 015.9	3 783.5
Jun Qtr	4 019.7	1 909.0	3 323.3	3 200.1	6 757.1	1 243.5	3 578.5	796.3	3 849.3
Sep Qtr	4 028.3	2 131.1	3 385.3	3 331.6	6 432.3	1 310.7	3 567.1	1 043.4	3 847.3
FEMALES (RATE PER 100,000 ADULT INDIGENOUS POPULATION)									
<b>2002</b>	361.9	193.0	228.5	286.2	385.6	111.5	70.7	279.8	265.6
<b>2003</b>	371.9	153.9	222.5	272.5	469.3	94.0	78.7	94.4	274.4
<b>2004</b>	423.3	156.3	223.3	200.9	600.9	143.0	57.7	13.9	302.7
<b>2004</b>									
Sep Qtr	418.7	154.4	234.6	201.9	630.6	144.7	50.2	—	307.8
Dec Qtr	422.9	180.8	235.4	227.2	686.7	157.8	68.8	55.6	323.6
<b>2005</b>									
Mar Qtr	454.4	179.0	229.8	273.6	714.7	90.4	100.4	—	339.0
Jun Qtr	447.0	171.7	233.8	269.5	660.2	103.4	116.8	53.8	332.5
Sep Qtr	420.1	222.8	239.5	318.5	613.7	109.8	98.5	—	323.3
PERSONS (RATE PER 100,000 ADULT INDIGENOUS POPULATION)									
<b>2002</b>	1 813.2	985.0	1 640.1	1 712.8	2 391.8	632.9	1 360.1	993.7	1 681.3
<b>2003</b>	1 924.5	1 016.5	1 632.8	1 687.0	2 677.8	597.5	1 656.9	883.5	1 788.3
<b>2004</b>	2 086.4	1 042.9	1 641.4	1 684.6	3 055.8	645.2	1 629.5	677.2	1 888.9
<b>2004</b>									
Sep Qtr	2 107.3	1 084.1	1 604.7	1 671.6	3 138.3	651.1	1 591.3	673.7	1 893.6
Dec Qtr	2 164.9	1 013.2	1 710.3	1 769.4	3 278.2	674.8	1 619.9	729.8	1 965.5
<b>2005</b>									
Mar Qtr	2 211.2	984.5	1 646.7	1 915.3	3 471.1	606.1	1 727.1	502.8	2 004.4
Jun Qtr	2 185.2	1 027.2	1 703.1	1 682.7	3 602.1	662.1	1 808.3	421.3	2 032.9
Sep Qtr	2 175.5	1 162.5	1 735.6	1 771.5	3 421.3	698.4	1 793.4	516.4	2 027.2
—	nil or rounded to zero (including null cells)			(c) Figures for the quarter and year for first day of the month counts are calculated as a simple average – see Explanatory Notes, paragraph 5.					
(a)	Persons in custody are asked their Indigenous status during reception into custody – see Explanatory Notes, paragraphs 18-19.			(d) Excludes ACT prisoners held in NSW prisons.					
(b)	The rates calculation uses the Indigenous population projection for 30 June of that calendar year as the denominator – see Explanatory Notes, paragraphs 26-29.			(e) From August 2005, data were sourced from two information systems and may be subject to variability.					
				(f) Includes ACT prisoners held in ACT as well as ACT prisoners held in NSW – see Explanatory Notes, paragraph 22.					

## INDIGENOUS PERSONS IN FULL-TIME CUSTODY, By legal status(a)(b)

	NSW(c)	Vic.	Qld(d)	SA	WA	Tas.(e)	NT	ACT in ACT(f)	ACT in NSW(c)	ACT Total(g)	Aust.(c)(e)
UNSENTENCED (NUMBER ON FIRST DAY OF MONTH)											
<b>2002</b>	290	35	199	92	146	15	83	8	—	9	866
<b>2003</b>	333	40	214	89	165	11	100	9	—	9	961
<b>2004</b>	352	38	245	97	190	15	99	7	—	7	1 043
<b>2004</b>											
Sep Qtr	341	39	241	102	190	14	95	7	—	7	1 029
Dec Qtr	365	34	247	108	175	18	86	10	—	10	1 043
<b>2005</b>											
Mar Qtr	395	38	240	125	223	15	112	7	—	7	1 155
Jun Qtr	391	44	250	104	210	17	106	7	—	7	1 128
Sep Qtr	370	49	250	117	206	22	99	9	—	9	1 122
SENTENCED (NUMBER ON FIRST DAY OF MONTH)											
<b>2002</b>	1 067	126	985	156	742	45	374	—	13	14	3 496
<b>2003</b>	1 136	132	996	162	854	46	468	—	12	12	3 796
<b>2004</b>	1 275	144	1 002	161	1 005	49	471	—	9	9	4 106
<b>2004</b>											
Sep Qtr	1 301	150	979	154	1 036	50	462	1	8	9	4 133
Dec Qtr	1 321	143	1 053	163	1 106	48	481	—	8	8	4 314
<b>2005</b>											
Mar Qtr	1 367	139	1 045	177	1 172	46	505	—	5	5	4 451
Jun Qtr	1 348	141	1 078	162	1 238	50	540	—	3	3	4 557
Sep Qtr	1 362	160	1 104	163	1 169	48	541	—	4	4	4 548
TOTAL (NUMBER ON FIRST DAY OF MONTH)											
<b>2002</b>	1 357	161	1 184	248	887	60	457	8	14	22	4 362
<b>2003</b>	1 469	172	1 210	251	1 019	58	569	9	12	20	4 757
<b>2004</b>	1 626	182	1 248	258	1 194	64	570	7	9	16	5 149
<b>2004</b>											
Sep Qtr	1 642	189	1 220	256	1 226	64	557	8	8	16	5 162
Dec Qtr	1 686	176	1 300	271	1 281	67	567	10	8	17	5 358
<b>2005</b>											
Mar Qtr	1 762	177	1 285	302	1 395	61	617	7	5	12	5 606
Jun Qtr	1 739	185	1 329	265	1 448	67	646	7	3	10	5 686
Sep Qtr	1 732	209	1 354	279	1 375	71	641	9	4	13	5 670

— nil or rounded to zero (including null cells)

- (a) Persons in custody are asked their Indigenous status during reception into custody – see Explanatory Notes, paragraphs 18-19.
- (b) Figures for the quarter and year for first day of the month counts are calculated as a simple average – see Explanatory Notes, paragraph 5.
- (c) Includes ACT prisoners held in NSW prisons. The ACT in NSW figures are a subset of the NSW figures and are not separately counted in the Australian totals – see Explanatory Notes, paragraph 20.

- (d) From August 2005, data were sourced from two information systems and may be subject to variability.
- (e) Tas. data prior to the September quarter 2003 are under enumerated – see Explanatory Notes, paragraph 13.
- (f) Refers to unsentenced persons in ACT prison custody and may include some sentenced fine default only prisoners – see Explanatory Notes, paragraph 20.
- (g) ACT in ACT figures and ACT in NSW figures may not add to ACT total due to rounding.

## INDIGENOUS IMPRISONMENT RATES, By legal status(a)(b)(c)

	NSW(d)	Vic.	Qld(e)	SA	WA	Tas.	NT	ACT(f)	Aust.
UNSENTENCED (RATE PER 100,000 ADULT INDIGENOUS POPULATION)									
<b>2002</b>	390.8	212.6	275.4	633.9	392.9	153.2	246.2	383.9	333.9
<b>2003</b>	439.6	234.2	288.5	596.5	434.3	118.1	292.5	370.9	361.2
<b>2004</b>	453.6	216.4	322.7	634.2	485.2	153.5	284.2	305.3	382.7
<b>2004</b>									
Sep Qtr	439.9	224.1	317.1	665.1	486.2	141.7	270.6	294.7	377.4
Dec Qtr	471.2	193.5	325.4	706.4	447.0	185.6	245.8	407.0	382.8
<b>2005</b>									
Mar Qtr	496.9	213.2	307.2	794.9	554.7	148.2	314.4	285.4	413.1
Jun Qtr	492.3	244.7	320.9	657.4	521.6	164.7	295.8	299.0	403.4
Sep Qtr	465.4	270.7	320.9	739.9	513.3	220.7	278.1	353.3	401.2
SENTENCED (RATE PER 100,000 ADULT INDIGENOUS POPULATION)									
<b>2002</b>	1 422.4	772.4	1 364.7	1 078.9	1 998.9	479.7	1 113.9	609.8	1 347.4
<b>2003</b>	1 484.9	782.4	1 344.3	1 090.6	2 243.5	479.4	1 364.4	512.7	1 427.1
<b>2004</b>	1 632.8	826.5	1 318.7	1 050.4	2 570.6	491.7	1 345.3	371.9	1 506.2
<b>2004</b>									
Sep Qtr	1 667.4	860.0	1 287.6	1 006.4	2 652.1	509.4	1 320.7	378.9	1 516.2
Dec Qtr	1 693.6	819.8	1 384.9	1 062.9	2 831.2	489.2	1 374.1	322.8	1 582.8
<b>2005</b>									
Mar Qtr	1 714.3	771.3	1 339.5	1 120.4	2 916.3	457.9	1 412.7	217.4	1 591.3
Jun Qtr	1 692.9	782.4	1 382.2	1 025.3	3 080.5	497.4	1 512.5	122.3	1 629.5
Sep Qtr	1 710.1	891.8	1 414.7	1 031.6	2 908.0	477.6	1 515.3	163.1	1 626.0
TOTAL (RATE PER 100,000 ADULT INDIGENOUS POPULATION)									
<b>2002</b>	1 813.2	985.0	1 640.1	1 712.8	2 391.8	632.9	1 360.1	993.7	1 681.3
<b>2003</b>	1 924.5	1 016.5	1 632.8	1 687.0	2 677.8	597.5	1 656.9	883.5	1 788.3
<b>2004</b>	2 086.4	1 042.9	1 641.4	1 684.6	3 055.8	645.2	1 629.5	677.2	1 888.9
<b>2004</b>									
Sep Qtr	2 107.3	1 084.1	1 604.7	1 671.6	3 138.3	651.1	1 591.3	673.7	1 893.6
Dec Qtr	2 164.9	1 013.2	1 710.3	1 769.4	3 278.2	674.8	1 619.9	729.8	1 965.5
<b>2005</b>									
Mar Qtr	2 211.2	984.5	1 646.7	1 915.3	3 471.1	606.1	1 727.1	502.8	2 004.4
Jun Qtr	2 185.2	1 027.2	1 703.1	1 682.7	3 602.1	662.1	1 808.3	421.3	2 032.9
Sep Qtr	2 175.5	1 162.5	1 735.6	1 771.5	3 421.3	698.4	1 793.4	516.4	2 027.2

- (a) Persons in custody are asked their Indigenous status during reception into custody – see Explanatory Notes, paragraphs 18-19.
- (b) The rates calculation uses the Indigenous population projection for 30 June of that calendar year as the denominator – see Explanatory Notes, paragraphs 26-29.
- (c) Figures for the quarter and year for first day of the month counts are calculated as a simple average – see Explanatory Notes, paragraph 5.
- (d) Excludes ACT prisoners in NSW prisons.
- (e) From August 2005, data were sourced from two information systems and may be subject to variability.
- (f) Includes ACT prisoners held in ACT as well as ACT prisoners held in NSW – see Explanatory Notes, paragraph 22.

## PERSONS IN PERIODIC DETENTION, By sex(a)

	NSW		ACT	
	no.(b)	rate(c)	no.(b)	rate(c)
MALES				
<b>2002</b>	831	33.7	66	55.5
<b>2003</b>	739	29.7	73	60.7
<b>2004</b>	687	27.3	89	73.7
<b>2004</b>				
Sep Qtr	696	27.6	92	76.4
Dec Qtr	695	27.5	93	76.9
<b>2005</b>				
Mar Qtr	716	28.3	93	76.9
Jun Qtr	773	30.4	98	80.7
Sep Qtr	782	30.7	94	76.6
Jul	800	31.4	96	78.5
Aug	771	30.3	93	75.8
Sep	775	30.4	92	75.5
FEMALES				
<b>2002</b>	68	2.7	4	3.6
<b>2003</b>	60	2.3	4	3.0
<b>2004</b>	62	2.4	4	3.3
<b>2004</b>				
Sep Qtr	59	2.3	6	4.7
Dec Qtr	76	2.9	4	3.5
<b>2005</b>				
Mar Qtr	82	3.1	5	3.7
Jun Qtr	73	2.8	8	6.2
Sep Qtr	72	2.7	9	6.7
Jul	71	2.7	8	6.3
Aug	72	2.7	8	6.1
Sep	72	2.7	10	7.7
PERSONS				
<b>2002</b>	899	17.9	70	29.0
<b>2003</b>	799	15.8	76	31.1
<b>2004</b>	749	14.6	93	37.8
<b>2004</b>				
Sep Qtr	755	14.7	98	39.8
Dec Qtr	771	15.0	98	39.5
<b>2005</b>				
Mar Qtr	798	15.5	98	39.6
Jun Qtr	846	16.4	106	42.7
Sep Qtr	854	16.5	102	41.0
Jul	871	16.8	104	41.7
Aug	843	16.3	100	40.3
Sep	847	16.4	102	41.0

- (a) Periodic detention is a form of custody only used in NSW and the ACT.  
 (b) Average daily number.  
 (c) Rate per 100,000 adult population.

## FEDERAL SENTENCED PERSONS IN FULL-TIME CUSTODY, By sex(a)(b)

	NSW	Vic.	Qld	SA	WA	Tas.	NT	ACT	Aust.
MALES (NUMBER ON FIRST DAY OF MONTH)									
<b>2002</b>	299	77	63	19	138	4	88	4	692
<b>2003</b>	305	73	72	18	112	5	31	3	619
<b>2004</b>	319	70	79	13	94	6	12	4	596
<b>2004</b>									
Sep Qtr	319	65	83	14	91	8	12	4	595
Dec Qtr	322	66	78	15	88	6	11	4	592
Mar Qtr	318	70	76	17	82	5	12	3	583
<b>2005</b>									
Jun Qtr	314	69	72	14	75	8	15	4	570
Sep Qtr	328	74	66	11	72	9	10	6	575
FEMALES (NUMBER ON FIRST DAY OF MONTH)									
<b>2002</b>	32	8	13	3	14	1	3	1	75
<b>2003</b>	30	8	15	4	11	2	3	1	74
<b>2004</b>	40	7	12	1	11	3	3	1	79
<b>2004</b>									
Sep Qtr	42	6	14	2	12	4	3	2	83
Dec Qtr	46	6	12	2	9	4	2	2	83
Mar Qtr	47	7	11	3	5	2	1	1	78
<b>2005</b>									
Jun Qtr	47	7	17	5	10	1	—	1	87
Sep Qtr	50	6	14	4	10	3	—	1	88
PERSONS (NUMBER ON FIRST DAY OF MONTH)									
<b>2002</b>	331	85	77	22	152	5	91	5	767
<b>2003</b>	335	82	87	22	123	7	34	4	693
<b>2004</b>	358	77	91	15	105	9	15	5	675
<b>2004</b>									
Sep Qtr	360	71	97	15	103	12	15	6	679
Dec Qtr	368	73	90	16	98	10	13	6	675
Mar Qtr	365	77	87	20	87	7	13	4	661
<b>2005</b>									
Jun Qtr	361	76	89	18	85	10	15	5	658
Sep Qtr	378	81	80	14	82	12	10	7	663
Jul	370	80	82	17	84	12	11	7	663
Aug	388	83	77	14	83	11	9	8	673
Sep	376	79	80	12	80	13	9	5	654

— nil or rounded to zero (including null cells)

- (a) This table shows prisoners by the state or territory in which they were sentenced, not where they were held in custody.
- (b) Figures for the quarter and year for the first day of the month counts are calculated as a simple average - see Explanatory Notes, paragraph 5.

## PERSONS IN COMMUNITY-BASED CORRECTIONS, By sex(a)(b)

	NSW	Vic.	Qld(c)	SA(d)	WA	Tas.	NT	ACT	Aust.(c)(d)
MALES (NUMBER ON FIRST DAY OF MONTH)									
<b>2002</b>	14 656	5 430	11 061	5 403	4 177	726	818	1 036	43 306
<b>2003</b>	14 436	6 100	9 239	5 016	3 936	762	859	989	41 337
<b>2004</b>	14 413	6 452	9 128	4 758	4 132	816	913	937	41 549
<b>2004</b>									
Sep Qtr	14 495	6 594	9 189	4 757	4 217	813	915	892	41 872
Dec Qtr	14 702	6 735	9 172	4 725	4 290	844	924	931	42 324
<b>2005</b>									
Mar Qtr	15 147	6 700	9 103	4 762	4 274	823	945	960	42 714
Jun Qtr	15 551	6 702	9 149	4 809	4 288	841	982	976	43 299
Sep Qtr	15 647	6 851	9 605	5 610	4 307	853	983	963	44 819
Jul	15 795	6 777	9 415	5 562	4 298	830	982	970	44 629
Aug	15 713	6 883	9 536	5 615	4 278	847	983	967	44 822
Sep	15 433	6 894	9 865	5 653	4 345	882	984	951	45 007
FEMALES (NUMBER ON FIRST DAY OF MONTH)									
<b>2002</b>	2 590	1 205	2 908	1 311	1 164	171	90	194	9 632
<b>2003</b>	2 533	1 325	2 431	1 158	1 181	176	108	167	9 080
<b>2004</b>	2 522	1 386	2 449	1 082	1 198	188	129	164	9 118
<b>2004</b>									
Sep Qtr	2 564	1 426	2 465	1 092	1 214	193	131	163	9 247
Dec Qtr	2 582	1 417	2 466	1 099	1 232	208	140	165	9 308
<b>2005</b>									
Mar Qtr	2 654	1 474	2 458	1 062	1 246	208	140	175	9 417
Jun Qtr	2 754	1 492	2 516	1 038	1 240	215	131	181	9 567
Sep Qtr	2 788	1 516	2 619	1 241	1 234	215	133	179	9 923
Jul	2 797	1 525	2 568	1 225	1 222	218	131	185	9 871
Aug	2 804	1 509	2 600	1 233	1 230	216	135	181	9 908
Sep	2 762	1 513	2 688	1 264	1 249	211	133	170	9 990
PERSONS (NUMBER ON FIRST DAY OF MONTH) (e)									
<b>2002</b>	17 340	6 755	13 969	6 764	5 341	896	908	1 230	53 203
<b>2003</b>	17 104	7 619	11 670	6 215	5 117	939	967	1 156	50 787
<b>2004</b>	17 005	8 119	11 577	5 870	5 330	1 004	1 042	1 102	51 049
<b>2004</b>									
Sep Qtr	17 124	8 301	11 654	5 878	5 432	1 006	1 046	1 054	51 495
Dec Qtr	17 342	8 359	11 638	5 848	5 522	1 052	1 065	1 095	51 922
<b>2005</b>									
Mar Qtr	17 865	8 187	11 561	5 841	5 520	1 032	1 086	1 135	52 227
Jun Qtr	18 373	8 291	11 665	5 870	5 528	1 056	1 113	1 158	53 054
Sep Qtr	18 496	8 444	12 226	6 875	5 541	1 068	1 116	1 141	54 906
Jul	18 655	8 384	11 983	6 811	5 520	1 048	1 113	1 155	54 669
Aug	18 575	8 469	12 136	6 872	5 508	1 063	1 118	1 148	54 889
Sep	18 257	8 479	12 558	6 942	5 594	1 093	1 117	1 121	55 161

(a) With the exception of Vic. and Tas., the number of persons in community-based corrections includes those persons with breached or suspended orders.

(b) Figures for the quarter and year for first day of the month counts are calculated as a simple average – see Explanatory Notes, paragraph 5.

(c) From August 2005, data were sourced from two information systems and may be subject to variability.

(d) Data movements from the June quarter 2005 may be influenced by data entry delays – see Explanatory Notes, paragraph 33.

(e) Includes persons whose sex is unknown.

## COMMUNITY-BASED CORRECTIONS RATES, By sex(a)(b)

	NSW	Vic.	Qld(c)	SA(d)	WA	Tas.	NT	ACT	Aust.(c)(d)
MALES (RATE PER 100,000 ADULT POPULATION)									
<b>2002</b>	594.5	295.5	802.8	949.1	584.7	422.3	1 116.4	875.1	591.0
<b>2003</b>	579.5	327.7	653.4	872.2	543.3	439.3	1 180.9	826.9	556.2
<b>2004</b>	572.6	342.4	625.9	820.1	559.6	462.2	1 234.0	776.8	550.4
<b>2004</b>									
Sep Qtr	574.7	349.0	627.3	818.9	569.4	459.0	1 235.3	737.1	553.1
Dec Qtr	581.8	355.5	622.9	811.8	577.0	475.6	1 241.8	767.9	557.4
<b>2005</b>									
Mar Qtr	597.8	352.2	614.9	816.2	572.1	462.7	1 265.2	790.3	560.5
Jun Qtr	611.9	351.2	614.6	822.6	570.7	470.7	1 311.6	802.4	566.0
Sep Qtr	614.2	357.8	639.1	956.7	570.0	476.3	1 302.2	788.7	583.3
Jul	620.0	353.9	626.4	948.6	568.8	463.4	1 300.9	794.7	580.8
Aug	616.8	359.4	634.5	957.6	566.2	472.9	1 302.2	792.3	583.3
Sep	605.8	360.0	656.3	964.1	575.0	492.5	1 303.5	779.2	585.7
FEMALES (RATE PER 100,000 ADULT POPULATION)									
<b>2002</b>	101.5	62.3	204.9	220.4	161.0	93.9	136.4	156.7	126.8
<b>2003</b>	98.2	67.7	166.8	192.9	160.5	96.1	165.0	133.6	117.9
<b>2004</b>	97.0	70.0	164.3	179.1	160.1	101.2	196.6	130.7	116.9
<b>2004</b>									
Sep Qtr	98.5	72.0	164.9	180.6	161.9	103.5	199.1	129.1	118.4
Dec Qtr	99.0	71.3	164.1	181.6	163.6	111.3	212.3	130.6	118.8
<b>2005</b>									
Mar Qtr	101.5	73.9	162.8	175.1	164.7	111.2	211.3	138.7	119.8
Jun Qtr	105.0	74.6	165.7	170.8	163.0	114.4	196.2	143.4	121.2
Sep Qtr	106.2	75.6	171.4	203.8	161.7	114.1	198.5	140.7	125.4
Jul	106.5	76.0	168.1	201.2	160.2	115.7	195.5	145.7	124.7
Aug	106.8	75.2	170.2	202.5	161.2	114.6	201.5	142.6	125.2
Sep	105.2	75.4	176.0	207.6	163.7	112.0	198.5	133.9	126.3
PERSONS (RATE PER 100,000 ADULT POPULATION) (e)									
<b>2002</b>	345.6	179.1	499.4	581.1	371.7	253.4	651.9	508.2	356.5
<b>2003</b>	337.4	199.5	406.4	528.8	350.5	262.9	699.8	472.2	335.6
<b>2004</b>	332.4	210.2	392.6	495.7	358.5	276.9	745.7	447.1	332.6
<b>2004</b>									
Sep Qtr	334.1	214.4	393.7	495.8	364.4	276.6	748.0	426.9	334.8
Dec Qtr	337.8	215.4	391.1	492.5	369.0	288.7	757.5	442.9	336.6
<b>2005</b>									
Mar Qtr	347.1	210.1	386.6	490.9	367.1	282.4	769.9	458.3	337.3
Jun Qtr	355.9	212.1	387.9	492.3	365.6	288.0	786.6	466.6	341.4
Sep Qtr	357.6	215.4	403.4	575.2	364.9	290.6	783.3	458.3	352.0
Jul	360.6	213.8	395.4	569.8	363.5	285.1	781.2	463.8	350.5
Aug	359.1	216.0	400.4	575.0	362.7	289.2	784.7	461.0	351.9
Sep	353.0	216.2	414.4	580.8	368.4	297.4	784.0	450.2	353.7

(a) With the exception of Vic. and Tas., the number of persons in community-based corrections includes those persons with breached or suspended orders.

(b) Figures for the quarter and year for the first day of the month are calculated as a simple average – see Explanatory Notes, paragraph 5.

(c) From August 2005, data were sourced from two information systems and may be subject to variability.

(d) Data movements from the June quarter 2005 may be influenced by data entry delays – see Explanatory Notes, paragraph 33.

(e) Includes persons whose sex is unknown.



	NSW(d)	Vic.	Qld(e)	SA(f)	WA(g)	Tas.	NT	ACT	Aust.(d)(e)(f)(g)
RESTRICTED MOVEMENT (NUMBER ON FIRST DAY OF MONTH)									
<b>2002</b>	199	..	81	211	84	..	37	2	613
<b>2003</b>	218	..	65	245	71	..	57	2	658
<b>2004</b>	185	10	70	331	40	..	56	5	697
<b>2004</b>									
Sep Qtr	171	18	62	326	11	..	51	5	645
Dec Qtr	176	16	76	340	13	..	58	7	686
<b>2005</b>									
Mar Qtr	192	20	69	336	20	..	60	4	701
Jun Qtr	231	23	77	343	19	..	57	3	753
Sep Qtr	227	23	103	371	20	..	47	1	793
Jul	234	24	89	370	np	..	49	np	789
Aug	225	25	100	364	np	..	47	np	781
Sep	223	20	120	379	np	..	45	np	808

	NSW(d)	Vic.	Qld(e)	SA(f)	WA(g)	Tas.	NT	ACT	Aust.(d)(e)(f)(g)
REPARATION-FINE OPTION (NUMBER ON FIRST DAY OF MONTH)									
<b>2002</b>	56	1 107	2 632	1 891	398	95	25	..	6 203
<b>2003</b>	7	1 590	1 940	1 301	388	85	3	..	5 314
<b>2004</b>	91	1 585	1 633	943	322	100	2	..	4 677
<b>2004</b>									
Sep Qtr	117	1 591	1 629	939	317	111	2	..	4 706
Dec Qtr	156	1 707	1 470	889	345	119	1	..	4 687
<b>2005</b>									
Mar Qtr	159	1 610	1 391	827	311	114	1	..	4 413
Jun Qtr	130	1 623	1 470	821	275	114	1	..	4 434
Sep Qtr	107	1 767	1 601	782	278	102	1	..	4 637
Jul	109	1 717	1 567	779	269	np	np	..	4 543
Aug	106	1 777	1 565	769	269	np	np	..	4 591
Sep	105	1 808	1 670	797	295	np	np	..	4 777

	NSW(d)	Vic.	Qld(e)	SA(f)	WA(g)	Tas.	NT	ACT	Aust.(d)(e)(f)(g)
REPARATION-COMMUNITY SERVICE (NUMBER ON FIRST DAY OF MONTH)									
<b>2002</b>	4 447	915	2 116	1 534	2 329	379	242	159	12 120
<b>2003</b>	4 411	945	1 883	1 566	2 148	380	256	140	11 730
<b>2004</b>	4 430	1 088	1 896	1 447	2 179	421	254	116	11 830
<b>2004</b>									
Sep Qtr	4 438	1 148	1 940	1 458	2 193	415	259	113	11 963
Dec Qtr	4 537	1 063	1 919	1 470	2 236	438	243	105	12 011
<b>2005</b>									
Mar Qtr	4 704	1 000	1 867	1 380	2 208	450	244	96	11 950
Jun Qtr	4 844	919	1 828	1 319	2 173	475	237	100	11 895
Sep Qtr	4 775	848	1 912	1 230	2 145	489	221	85	11 705
Jul	4 816	865	1 853	1 215	2 147	486	231	90	11 703
Aug	4 785	846	1 900	1 243	2 135	488	218	86	11 701
Sep	4 724	832	1 984	1 233	2 152	493	213	79	11 710

.. not applicable

np not available for publication but included in totals where applicable, unless otherwise indicated

(a) If a person has more than one type of order, they are counted against each order in this table. If a person has more than one order of the same order type, they are counted once in the order type.

(b) With the exception of Vic. and Tas., the number of persons in community-based corrections includes those persons with breached or suspended orders.

(c) Figures for the quarter and year for first day of the month counts are calculated as a simple average – see Explanatory Notes, paragraph 5.

(d) Bail figures in NSW prior to September quarter 2003 are under enumerated – see Explanatory Notes, paragraph 14.

(e) From August 2005, data were sourced from two information systems and may be subject to variability.

(f) Data movements from the June quarter 2005 may be influenced by data entry delays – see Explanatory Notes, paragraph 33.

(g) Bail figures for WA became available from December quarter 2003 – see Explanatory Notes, paragraph 36. Prior to the September quarter 2004, counts of restricted movement included conditional bail orders. These are now included in bail orders.

	NSW(d)	Vic.	Qld(e)	SA(f)	WA(g)	Tas.	NT	ACT	Aust.(d)(e)(f)(g)
SUPERVISION (COMPLIANCE)-PAROLE (NUMBER ON FIRST DAY OF MONTH)									
<b>2002</b>	3 425	1 198	1 252	904	1 303	88	163	133	8 465
<b>2003</b>	3 573	1 335	1 045	931	1 264	92	150	111	8 502
<b>2004</b>	3 756	1 465	932	949	1 255	95	153	113	8 719
<b>2004</b>									
Sep Qtr	3 803	1 459	928	982	1 261	93	155	107	8 788
Dec Qtr	3 909	1 482	928	961	1 287	87	153	105	8 912
<b>2005</b>									
Mar Qtr	4 092	1 482	953	946	1 315	90	144	120	9 142
Jun Qtr	4 134	1 578	922	934	1 321	84	139	142	9 255
Sep Qtr	4 232	1 635	950	907	1 343	93	141	158	9 458
Jul	4 271	1 607	942	899	1 321	90	138	153	9 421
Aug	4 249	1 634	948	907	1 338	94	143	154	9 467
Sep	4 176	1 664	959	915	1 369	95	141	166	9 485

	NSW(d)	Vic.	Qld(e)	SA(f)	WA(g)	Tas.	NT	ACT	Aust.(d)(e)(f)(g)
SUPERVISION (COMPLIANCE)-BAIL (NUMBER ON FIRST DAY OF MONTH)									
<b>2002</b>	172	..	..	300	..	..	3	197	671
<b>2003</b>	288	..	..	439	7	..	3	185	922
<b>2004</b>	275	..	..	571	154	..	5	179	1 184
<b>2004</b>									
Sep Qtr	276	..	..	565	228	..	4	161	1 234
Dec Qtr	242	..	..	642	233	..	6	195	1 317
<b>2005</b>									
Mar Qtr	240	..	..	733	229	..	4	210	1 417
Jun Qtr	214	..	..	774	243	..	4	211	1 446
Sep Qtr	224	..	..	796	230	..	5	195	1 450
Jul	226	..	..	763	228	..	6	201	1 424
Aug	232	..	..	804	229	..	5	211	1 481
Sep	214	..	..	822	232	..	5	173	1 446

	NSW(d)	Vic.	Qld(e)	SA(f)	WA(g)	Tas.	NT	ACT	Aust.(d)(e)(f)(g)
SUPERVISION (COMPLIANCE)-SENTENCED PROBATION (NUMBER ON FIRST DAY OF MONTH)									
<b>2002</b>	11 109	3 725	7 888	2 641	3 342	438	465	812	30 419
<b>2003</b>	10 618	3 940	7 607	2 642	3 212	500	528	842	29 888
<b>2004</b>	10 285	4 233	7 553	2 491	3 396	516	608	815	29 897
<b>2004</b>									
Sep Qtr	10 342	4 375	7 580	2 526	3 472	515	612	797	30 219
Dec Qtr	10 387	4 366	7 690	2 547	3 490	544	641	819	30 484
<b>2005</b>									
Mar Qtr	10 586	4 302	7 631	2 591	3 523	517	668	827	30 645
Jun Qtr	10 958	4 295	7 648	2 616	3 562	523	709	837	31 149
Sep Qtr	11 109	4 410	8 742	2 621	3 616	531	736	814	32 578
Jul	11 194	4 398	8 581	2 627	3 598	513	726	820	32 457
Aug	11 168	4 427	8 688	2 617	3 619	526	736	808	32 589
Sep	10 964	4 404	8 957	2 620	3 630	553	746	815	32 689

.. not applicable

- (a) If a person has more than one type of order, they are counted against each order in this table. If a person has more than one order of the same order type, they are counted once in the order type.
- (b) With the exception of Vic. and Tas., the number of persons in community-based corrections includes those persons with breached or suspended orders.
- (c) Figures for the quarter and year for first day of the month counts are calculated as a simple average – see Explanatory Notes, paragraph 5.

(d) Bail figures in NSW prior to September quarter 2003 are under enumerated – see Explanatory Notes, paragraph 14.

(e) From August 2005, data were sourced from two information systems and may be subject to variability.

(f) Data movements from the June quarter 2005 may be influenced by data entry delays – see Explanatory Notes, paragraph 33.

(g) Bail figures for WA became available from December quarter 2003 – see Explanatory Notes, paragraph 36. Prior to the September quarter 2004, counts of restricted movement included conditional bail orders. These are now included in bail orders.

## EXPLANATORY NOTES

### INTRODUCTION

**1** This publication presents statistical series on persons held in either adult corrective services custody or who are serving adult community-based orders in Australia. It contains data on the number of persons by their sex, Indigenous status, type of custody, legal status and sentence type; the number of sentenced persons received into corrective services custody each month; and the number of federal prisoners.

**2** Statistics presented in this publication are compiled in three ways:

- Average daily prisoner population: Counts taken on each day of the month are summed and divided by the number of days in that month to determine the average daily prisoner population for that month. The average daily periodic detainee population is a count of persons on periodic detention on each day a centre is open, divided by the number of days a centre is open.
- Sentenced prisoner reception figures: Counts are provided each month on the number of receptions where a prisoner is received as a sentenced prisoner. This includes prisoners with a change of legal status from unsentenced to sentenced.
- First day of the month prisoner population: Counts of prisoner populations, taken on or near the first day of the month (see Explanatory Notes, paragraphs 4 and 5), and counts of persons serving community-based corrections orders.

**3** Although national standards and classifications are used in the compilation of these statistics, some discrepancies remain between the states and territories. These are due to legislative and procedural differences between jurisdictions and the way that these differences are reflected in agencies' administrative data systems. As part of its quality assurance strategy, the ABS is working with corrective services agencies to minimise the effect of these differences.

### REFERENCE PERIOD/DATE

**4** The reference period for average daily prisoner population statistics and sentenced reception counts is the complete reference month. Prior to the December quarter 2004, average daily statistics for Australian Capital Territory prisoners held in New South Wales could not be supplied, and a single count taken on a specific day of the month was used instead. The reference date for all other figures is the first day of the reference month. However, not all states and territories report strictly according to this 'first day of the month' rule:

- The Western Australian and Victorian prison population and Australian Capital Territory prisoners in New South Wales prisons are counted as at midnight on the last day of the month. In these cases the figures provided are taken to represent the prison population at the beginning of the following month to align with practices in other states and territories.
- Prior to the September quarter 2004, the New South Wales prison population was counted on the last Sunday of the month. The New South Wales community-based corrections population is counted on the first day of the month.

**5** Calculation of figures for the entire quarter and entire year varies depending on the counting unit and method of counting prisoners:

- Average daily figures: Figures are calculated by weighting the average according to the number of days in each month or year.
- First day of the month: Figures are simple averages. For quarterly figures, the sum of the monthly data is divided by three; for yearly figures, the figures for each month are added and the total divided by twelve.
- Sentenced receptions: Figures are totals of each month.
- These figures may be subject to rounding.

### SCOPE

**6** The scope of the statistics in this publication includes all persons remanded or sentenced to adult custodial corrective services agencies (including Work Outreach Camps and Community Custody Centres in Queensland), or who are serving adult community-based orders in each state and territory in Australia.

## EXPLANATORY NOTES *continued*

### SCOPE *continued*

**7** Counts of prisoners in the following custodial facilities are included in the collection:

- gazetted prisons in all jurisdictions
- periodic detention centres in New South Wales and the Australian Capital Territory
- Community Custody Centres and Work Outreach Camps in Queensland
- cells in court complexes administered by corrective services in New South Wales
- transitional centres in New South Wales
- lock-ups in Western Australia operated by the police but designated as a prison by the Chief Executive Officer of Corrective Services.

**8** The prisons and community corrections collection excludes the following custodial facilities:

- police lockups, police prisons and cells in court complexes not administered and controlled by corrective services
- gazetted police prisons in the Northern Territory
- juvenile detention centres
- immigration detention centres
- military prisons.

**9** This collection includes counts of persons remanded or sentenced to adult custody facilities, or directed to serve community based orders administered by adult corrective services agencies. In all states and territories except Victoria and Queensland, persons are considered adults if aged 18 years and over. In Victoria and Queensland persons are considered adults if aged 17 years and over. The vast majority of persons counted in the collection are adults. However, juveniles may be included in exceptional circumstances.

**10** Federal prisoners include those persons charged and sentenced under a Commonwealth statute, and those persons who are charged and sentenced under the laws of another country but transferred to an Australian prison to serve their sentence under the *International Transfer of Prisoners Act 1997* (Cwlth). To give practical effect to this legislation in Australia, the framework was introduced in January 2003. For the purposes of this publication, federal sentenced prisoners are those persons who are recognised by the Criminal Law Division of the Australian Government Attorney-General's Department as having been charged and sentenced under a Commonwealth statute, or transferred from another country to serve their sentence in Australia.

**11** Community-based corrections includes those persons with breached or suspended orders, with the exception of Victoria and Tasmania.

### DATA SOURCE

**12** Statistics in this publication are derived from information provided to the ABS from administrative records held by corrective services agencies within each state and territory. Statistics on federal prisoners are derived from records kept by the Criminal Law Division of the Australian Government Attorney-General's Department.

**13** Tasmanian first day of month data for reference periods prior to the September quarter 2003 are under enumerated. Prior to January 2004, sentenced reception figures for Tasmania do not include all prisoners changing from unsentenced custody to sentenced custody.

**14** New South Wales have implemented regular quality assurance processes on their community-based corrections data. Prior to the September quarter 2003, pre-sentence reports were omitted from reported bail figures, and therefore data for earlier reference periods are under enumerated.

### COUNTING RULES

**15** Statistics for persons held in custody are presented by the state or territory in which they were held and therefore may not be the sentencing jurisdiction. The only exception to this are data for federal sentenced prisoners. These are presented by the state or territory in which they were sentenced, not where they were held in custody.

## EXPLANATORY NOTES *continued*

### COUNTING RULES *continued*

**16** Sentenced prisoners who have other offences that are unsentenced are counted as sentenced. Prisoners may be unsentenced because they are awaiting the outcome of their trial, convicted but awaiting sentence, or awaiting deportation.

**17** If an offender has two or more different types of community-based orders operating simultaneously, then each order will be counted. If two or more community-based orders are of the same type, these orders together will only be counted as one order.

### INDIGENOUS IDENTIFICATION

**18** In all states and territories persons are asked during entry into custody whether they are of Aboriginal or Torres Strait Islander origin. It is uncommon for corrective services agencies to collect Indigenous status information from sources other than the person's own identification.

**19** Some persons in custody are recorded with an unknown Indigenous status on the information systems of corrective services agencies. Such persons are designated as non-Indigenous in this collection. Unknown Indigenous status is likely to be collected from these systems in the future.

### AUSTRALIAN CAPITAL TERRITORY PRISONERS

**20** Persons sentenced to full-time custody by the Australian Capital Territory are usually held in New South Wales prisons. The Australian Capital Territory has two remand centres for unsentenced prisoners and a periodic detention centre. During 2000 the Australian Capital Territory commenced detaining prisoners sentenced for fine default only at their remand centres. Unsented Australian Capital Territory prisoners may also be detained in New South Wales prisons.

**21** To provide greater understanding of the number of prisoners attributed to the Australian Capital Territory, while presenting an accurate picture of the New South Wales prisoner population, statistics relating to Australian Capital Territory prisoners in New South Wales prisons are presented as a subset of the New South Wales figures.

**22** Imprisonment rate data for the Australian Capital Territory are included in the publication and are calculated on the basis of the total number of Australian Capital Territory prisoners (i.e. Australian Capital Territory prisoners held in New South Wales prisons, and Australian Capital Territory prisoners held in the Australian Capital Territory) divided by the estimated resident Australian Capital Territory adult population and multiplied by 100,000. For New South Wales, the imprisonment rate is based on the count of New South Wales prisoners, excluding Australian Capital Territory prisoners held in New South Wales prisons, divided by the estimated resident New South Wales adult population and multiplied by 100,000. Time series data have also been derived on this basis.

### RATES

**23** Imprisonment and community-based corrections rates enable comparisons of prisoner numbers to be made across states and territories. Prisoner and community-based corrections rates are expressed per 100,000 adult population.

**24** In this publication the population figures used in the calculation of rates are for persons aged 18 years and over for all states and territories except Victoria and Queensland where the population is persons aged 17 years and over (see Explanatory Notes, paragraph 9).

**25** Rates for the total adult prisoner population and persons in community-based corrections are calculated using the estimated resident population (ERP) for each of the states and territories (refer *Australian Demographic Statistics* (cat. no. 3101.0)). All estimates for the Australian Capital Territory exclude Jervis Bay Territory. All estimates for Australia exclude the external territories of Christmas Island and the Cocos (Keeling) Island. As the population changes over time the denominator used for the calculation of rates varies, depending on the reference period. The most current ERP data available at the time of publication are used to calculate rates as follows:

## EXPLANATORY NOTES *continued*

### RATES *continued*

- for the March quarter, ERP is from the previous September quarter;
- for the June quarter, ERP is from the previous December quarter;
- for the September quarter, ERP is from the previous March quarter;
- for the December quarter, ERP is from the previous June quarter; and
- annual rates are an average of the rates of the contributing quarters.

### *Indigenous imprisonment rates*

**26** Rates for the Indigenous adult population in this publication are based on the low series projections for 30 June of the current calendar year (refer to *Experimental Estimates and Projections, Aboriginal and Torres Strait Islander Australians, 30 June 1991 to 30 June 2009* (cat. no. 3238.0)). These projections are based on the 2001 Census of Population and Housing.

**27** The low series are one of two series of these projections that have been published for the years 2002 to 2009.

- The low series assumes no 'unexplained growth' – that is, the Indigenous population recorded in the 2001 Census of Population and Housing is projected to change only as a result of births and deaths (natural increase) and, for the states and territories, as a result of interstate migration.
- The high series assumes that there will be 'unexplained growth' in the Indigenous population – that is, the Indigenous population is projected to change as a result of an unexplained component in addition to the effects of natural increase and interstate migration. The size of the unexplained component is based on the 'unexplained growth' observed between the 1996 and 2001 censuses.

**28** The decision to use the low series as the denominator in the calculation of Indigenous imprisonment rates from 2002 followed consultation with the National Corrective Services Statistics Unit Advisory Group and other stakeholders.

### *Revisions to historical Indigenous rates*

**29** Historical rates for Indigenous prisoners have been revised using Indigenous population projections based on the 2001 Census of Population and Housing (low series) for 2002 to 2004.

### SIGNIFICANT EVENTS

**30** The administrative classification of the following NSW correctional facilities was altered at 1 July 2005: Cooma, Dilwynia, Paramatta and Berrima. These facilities changed classification from 'open' to 'secure' to reflect alterations in the profile of inmates held, and the operational requirements of those centres. As such, the proportion of persons in secure and open custody altered in the September quarter 2005 compared to previous quarters.

**31** In December 2004 Victoria's Beechworth Prison closed while a new correctional facility (Beechworth Correctional Centre) opened in February 2005. The old Beechworth Prison was classified as medium security and the new Correctional Centre is classified as minimum security. Data previously published for secure custody were overcounted and open custody were undercounted. Data for the March and June quarters have been revised to reflect this change.

**32** The Maryborough Correctional Centre, Queensland, was officially opened in April 2003. The Centre has the capacity to hold 500 prisoners.

**33** Data extracted from the South Australian information system from the June quarter 2005 onwards may be subject to data processing time lags. Stable data for South Australia may therefore only be available after the publication release date and may differ from that published.

**34** During 2002 the following factors in Western Australia impacted on the prisoner population: an increase in the acquittal and dismissal rates in courts; greater use by the courts of suspended imprisonment and community orders as penalties; and a decrease in the breach rate for early release orders. The impact of these factors has been

## EXPLANATORY NOTES *continued*

### SIGNIFICANT EVENTS *continued*

proportionally greater on the number of Indigenous prisoners who tend to be convicted of offences that attract shorter sentences.

**35** During 2003 in Western Australia there was an increase in the number of Indigenous persons sentenced to imprisonment by the courts, mostly in relation to 'Driving/Traffic', 'Against the Person' and 'Justice/Good Order' offences.

**36** A range of amendments to Western Australian corrections legislation came into effect in 2003 and 2004. As a result, bail figures were included for the first time in the December quarter 2003 for Western Australia. Prior to the September quarter 2004, counts of restricted movement orders included conditional bail orders (that may have a restricted movement condition). All conditional bail orders are now counted as bail orders.

**37** In the June quarter 2005, Western Australia implemented a strategy to reduce the number of fine defaulters being taken into custody by offering alternative means of payment. This has resulted in a decrease in the number of sentenced receptions into custody for the September quarter 2005.

**38** During the March and June quarters of 2002, Tasmania recorded a large increase in the number of unsentenced prisoners. This overall increase was due to a greater number of lodgments in the Supreme Court coupled with the move by police to more actively oppose bail. The variation over the period is explained primarily by the availability of judicial resources. A Supreme Court judge was allocated to a long running trial in the March and June quarters of 2002 – this represented 25% of the judicial resources allocated to crime by the court. There was also a reduction in the number of magistrates available in the Court of Petty Sessions due to a number of long running coronial inquests.

**39** In the Northern Territory, over the 12 months to 30 June 2003, there was an increase in the number of Indigenous persons sentenced to imprisonment for a range of assault and driving offences.

### RELATED PUBLICATIONS

#### *ABS Publications*

**40** Other ABS publications that may be of interest include:  
*Australian Demographic Statistics* (cat. no. 3101.0) – issued quarterly  
*Australian Social Trends* (cat. no. 4102.0) – issued annually  
*Australian Standard Offence Classification* (cat. no.1234.0) – irregular  
*Crime and Safety, Australia* (cat. no. 4509.0) – irregular  
*Criminal Courts, Australia* (cat. no. 4513.0) – issued annually  
*Experimental Estimates and Projections, Aboriginal and Torres Strait Islander Australians, 30 June 1991 to 30 June 2009* (cat. no. 3280.0)  
*General Social Survey: Summary Results, Australia* (cat. no. 4159.0) – irregular  
*Information Paper: Measuring Crime Victimization, Australia: The Impact of Different Collection Methodologies* (cat. no. 4522.0.55.001) – single issue  
*Information paper: National Information Development Plan for Crime and Justice Statistics 2005* (cat. no. 4520.0) – single issue  
*Measures of Australia's Progress* (cat. no. 1370.0) – issued annually  
*Prisoners in Australia* (cat. no. 4517.0) – issued annually  
*Recorded Crime – Victims, Australia* (cat. no. 4510.0) – issued annually  
*Sexual Assault in Australia: A Statistical Overview* (cat. no. 4523.0) – single issue  
*Year Book Australia* (cat. no. 1301.0) – issued annually

**41** Current publications and other products released by the ABS are listed in the *Catalogue of Publications and Products* (cat. no. 1101.0). The Catalogue is available from the ABS web site <<http://www.abs.gov.au>>. The ABS also issues a daily Release Advice on the web site that details products to be released in the week ahead. The National Centre for Crime and Justice Statistics releases a biannual newsletter that is

## EXPLANATORY NOTES *continued*

---

### *ABS Publications continued*

published on the ABS web site. The Centre can be contacted by email through <crime.justice@abs.gov.au>.

### *Non-ABS Publications*

**42** Non-ABS sources that may be of interest include:

Australian Institute of Criminology, *List of Publications* – irregular

<<http://www.aic.gov.au>>

Crime Research Centre, University of Western Australia, *Crime and Justice Statistics for Western Australia* – issued bi-annually

<<http://www.crc.law.uwa.edu.au>>

Department of Corrective Services, New South Wales, *NSW Inmate Census* – irregular

<<http://www.dcs.nsw.gov.au>>

Department of Justice, Northern Territory, *Northern Territory Quarterly Crime and Justice Statistics* – issued quarterly

<<http://www.nt.gov.au/justice/>>

Department of Justice, Victoria, *Statistical Profile of the Victorian Prison System* – issued annually

<<http://www.justice.vic.gov.au>>

NSW Bureau of Crime Statistics and Research, *New South Wales Criminal Courts Statistics* – issued annually

<<http://www.lawlink.nsw.gov.au>>

Office of Crime Statistics and Research, South Australia, *Crime and Justice in South Australia* – issued annually

<<http://www.ocsar.sa.gov.au>>

Steering Committee for the Review of Commonwealth/State Service Provision, *Report on Government Services* – issued annually

<<http://www.pc.gov.au/publications/index.html>>



## GLOSSARY

<b>Bail</b>	This is generally a pre-sentence option where a person is released into the community for a period before they appear in court for trial or final sentencing. Bail orders can require a financial surety to be lodged with the court, and a number of conditions including supervision and residential requirements designed to ensure the re-appearance of the person at court. Bail counts are available only in states and territories where bail orders are supervised by corrective services. Bail is a sub-category of Supervision where the person is under the supervision of corrective services ( <i>see</i> Supervision).
<b>Community-based corrections</b>	This refers to the community-based management of court-ordered sanctions, post-prison administrative arrangements and fine conversions, which principally involve the provision of one or more of the following activities: supervision, programs or community work.
<b>Community service</b>	This category of community-based corrections orders includes sentencing options requiring offenders to undertake a specified number of hours of unpaid, supervised work to benefit the community on an approved project. Community service is a sub-category of Reparation ( <i>see</i> Reparation).
<b>Corrective services custody</b>	Confinement in a place intended primarily for the purpose of confining prisoners, such as a prison, prison farm, Periodic Detention Centre or Community Custody Centre.
<b>Federal sentenced prisoner</b>	Persons charged and sentenced under a Commonwealth statute or transferred from another country to serve their sentence in Australia.
<b>Fine option</b>	A community-based sentence type where the offender is serving a sentence for default of a fine. In most jurisdictions this order type requires an offender to complete community service as a reparatory act. Fine option is a sub-category of Reparation ( <i>see</i> Reparation).
<b>Full-time prison custody</b>	A type of custody where a prisoner is required to be held in custody on a full-time basis. This includes prisons, Queensland Community Custody Centres and work outreach camps. Full-time prison custody excludes periodic detention ( <i>see</i> Periodic detention).
<b>Home detention</b>	( <i>see</i> Restricted movement)
<b>Indigenous prisoner</b>	A prisoner who identifies as being of Aboriginal or Torres Strait Islander origin, or both.
<b>Legal status</b>	A person may be either sentenced or unsentenced depending on the warrant(s) or court order(s) that provide the legal basis for the administration of the person through the criminal justice system.
<b>Open custody</b>	Refers to prisoners housed in minimum security custodial facilities that do not require them to be confined by a secure perimeter physical barrier, irrespective of whether a physical barrier exists.
<b>Parole</b>	A parole order is made following a period of imprisonment and requires an offender to be subject to supervision in the community. Additional conditions may also be applied such as programs, counselling or drug testing. Parole is a sub-category of Supervision ( <i>see</i> Supervision).
<b>Periodic detention</b>	A type of custody or order where a sentenced prisoner is required to be held in custody on a part-time basis. Currently this consists of two consecutive days in a one-week period, while remaining at liberty during the rest of the week.
<b>Prisoner</b>	A person held in custody. For the purposes of this collection, prisoners are those whose confinement is the responsibility of a corrective services agency.
<b>Remand</b>	( <i>see</i> Unsented)
<b>Reparation</b>	Reparation refers to all offenders with an order that requires them to undertake unpaid, justice agency-approved community service work.

## GLOSSARY *continued*

---

<b>Restricted movement</b>	This refers to persons who are subject to a system of restricted movement, including supervision and/or electronic monitoring. This category includes home detention that may restrict residence to a nominated place. Restricted movement can be either a pre-sentence or post-sentence order.
<b>Secure custody</b>	Refers to prisoners housed in medium or maximum security custodial facilities requiring them to be confined by a secure physical barrier.
<b>Sentenced</b>	A legal status indicating that a person has received a custodial or community-based order from a court in response to a conviction for an offence.
<b>Sentenced prisoner reception</b>	Refers to entry into corrective services custody from the community, having received a sentence of imprisonment as an outcome of a court proceeding; or persons who are sentenced to custody while in custody on remand (i.e. changed status from a remand to a sentenced prisoner); or persons entering custody as a result of defaulting on the payment of a fine. Sentenced prisoners in custody who receive a further sentence of imprisonment are not counted as sentenced receptions.
<b>Sentenced probation</b>	A supervision order made following an original sentence handed down in court following conviction. A probation order generally requires 'good behaviour' and compliance with the directions of supervisors. The order may also require compliance with conditions such as program attendance and residential requirements.
<b>Supervision (compliance)</b>	This includes community-based orders other than those categorised as restricted movement or reparation (e.g. parole, bail and sentenced probation).
<b>Unsentenced</b>	A legal status indicating that a person is confined to custody or supervision while awaiting the outcome of their trial.



## FOR MORE INFORMATION . . .

- INTERNET* **www.abs.gov.au** the ABS web site is the best place to start for access to summary data from our latest publications, information about the ABS, advice about upcoming releases, our catalogue, and Australia Now—a statistical profile.
- LIBRARY* A range of ABS publications is available from public and tertiary libraries Australia-wide. Contact your nearest library to determine whether it has the ABS statistics you require, or visit our web site for a list of libraries.
- CPI INFOLINE* For current and historical Consumer Price Index data, call 1902 981 074 (call cost 77c per minute).
- DIAL-A-STATISTIC* This service now provides only current Consumer Price Index statistics call 1900 986 400 (call cost 77c per minute).

## INFORMATION SERVICE

Data already published that can be provided within five minutes will be free of charge. Our information consultants can also help you to access the full range of ABS information—ABS user pays services can be tailored to your needs, time frame and budget. Publications may be purchased. Specialists are on hand to help you with analytical or methodological advice.

- PHONE* 1300 135 070
- EMAIL* [client.services@abs.gov.au](mailto:client.services@abs.gov.au)
- FAX* 1300 135 211
- POST* Client Services, ABS, GPO Box 796, Sydney NSW 2001

## FREE ACCESS TO PUBLICATIONS

All ABS publications can be downloaded free of charge from the ABS web site.

- WEB ADDRESS* [www.abs.gov.au](http://www.abs.gov.au)



2451200009054

ISSN 1440 5997

RRP \$24.00